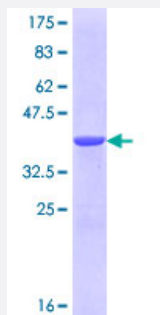


TJAP1 (Human) Recombinant Protein (Q01)

Catalog # H00093643-Q01

Size 25 ug, 10 ug

Applications



Specification

Product Description	Human TJAP1 partial ORF (NP_542171.1, 77 a.a. - 180 a.a.) recombinant protein with GST-tag at N-terminal.
Sequence	LELELGQSREELDKFKDKFRRLQNSYASQRTNQELEDKLHTLIKKAEMDRKTLDWELTNKLL DAKNTINKLEELNERYRLDCNPAVQLLKCNKSHFRNHK
Host	Wheat Germ (in vitro)
Theoretical MW (kDa)	37.18
Interspecies Antigen Sequence	Mouse (97); Rat (97)
Preparation Method	in vitro wheat germ expression system
Purification	Glutathione Sepharose 4 Fast Flow
Quality Control Testing	12.5% SDS-PAGE Stained with Coomassie Blue.
Storage Buffer	50 mM Tris-HCl, 10 mM reduced Glutathione, pH=8.0 in the elution buffer.
Storage Instruction	Store at -80°C. Aliquot to avoid repeated freezing and thawing.
Note	Best use within three months from the date of receipt of this protein.

Applications

- Enzyme-linked Immunoabsorbent Assay
- Western Blot (Recombinant protein)
- Antibody Production
- Protein Array

Gene Info — TJAP1

Entrez GeneID [93643](#)

GeneBank Accession# [NM_080604](#)

Protein Accession# [NP_542171.1](#)

Gene Name TJAP1

Gene Alias DKFZp686F06131, PILT, TJP4

Gene Description tight junction associated protein 1 (peripheral)

Gene Ontology [Hyperlink](#)

Gene Summary This gene encodes a tight junction-associated protein. Incorporation of the encoded protein into tight junctions occurs at a late stage of formation of the junctions. The encoded protein localizes to the Golgi and may function in vesicle trafficking. Alternatively spliced transcript variants have been described. A related pseudogene exists on the X chromosome. [provided by RefSeq]

Other Designations OTTHUMP00000016453|OTTHUMP00000016454|OTTHUMP00000016455|OTTHUMP00000016458|OTTHUMP00000039822|protein incorporated later into tight junctions|tight junction protein 4 (peripheral)

Pathway

- [Tight junction](#)