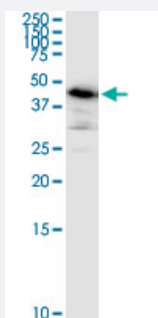


# ARMC6 monoclonal antibody (M03), clone 2H8

Catalog # H00093436-M03

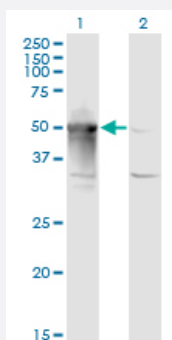
Size 100 ug

## Applications



### Western Blot (Cell lysate)

ARMC6 monoclonal antibody (M03), clone 2H8. Western Blot analysis of ARMC6 expression in IMR-32.

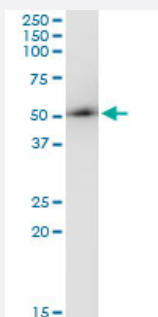


### Western Blot (Transfected lysate)

Western Blot analysis of ARMC6 expression in transfected 293T cell line by ARMC6 monoclonal antibody (M03), clone 2H8.

Lane 1: ARMC6 transfected lysate (Predicted MW: 51.5 KDa).

Lane 2: Non-transfected lysate.

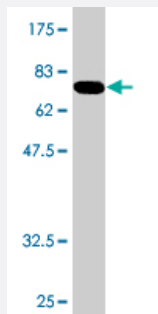
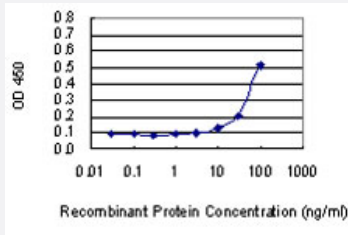


### Immunoprecipitation

Immunoprecipitation of ARMC6 transfected lysate using anti-ARMC6 monoclonal antibody and Protein A Magnetic Bead, and immunoblotted with ARMC6 monoclonal antibody.

## Sandwich ELISA (Recombinant protein)

Detection limit for recombinant GST tagged ARMC6 is 3 ng/ml as a capture antibody.



Western Blot detection against Immunogen (78.1 KDa) .

## Specification

|                                      |  |
|--------------------------------------|--|
| <b>Product Description</b>           | Mouse monoclonal antibody raised against a full-length recombinant ARMC6.  |
| <b>Immunogen</b>                     | ARMC6 (AAH67125, 1 a.a. ~ 476 a.a) full-length recombinant protein with GST tag. MW of the GST tag alone is 26 KDa.  |
| <b>Sequence</b>                      | MVSKRIAQETFDAAVRENIEEFAMGPPEAVKEAVEQFESQGVDSLNVKTAPKVSADGSQEPTH<br>DILQMLSDLQESVASSRPQEV SAYLTRFCDQCKQDKACRFLAAQKGAYPIIFTAWKLATAGDQGL<br>LLQSLNALSVLTDGQPDLLDAQGLQLLVATLTQNADEADLTCSGIRCVRHACLKHEQNRQDLVKA<br>GVPLLLTGAITHHGHHTDVVREACWALRVMTFDDDIRVPFGHAHNHAKMIVQENKGLKVLIEATKA<br>FLDNPGILSEL CGTLSRLAIRNEFCQEVVDLGGLSILVSLADCNDHQM RDQSGVQELVKQVLSTL<br>RAIAGNDDVKDAIMRAGGTESIVAAMTQH LTSPQVCEQSCAALCFLALRKPDNSRIVEGGGAVAA<br>LQAMKAHPQKAGVQKQACMLIRNLVAHGQAFSKPILDLGAEALIMQARS AHRDCEDVAKAALRD<br>LGCHVELRELWTGQRGNLAP |
| <b>Host</b>                          | Mouse  |
| <b>Reactivity</b>                    | Human  |
| <b>Interspecies Antigen Sequence</b> | Mouse (83); Rat (80)   |
| <b>Isotype</b>                       | IgG1 Kappa   |
| <b>Quality Control Testing</b>       | Antibody Reactive Against Recombinant Protein.<br>Western Blot detection against Immunogen (78.1 KDa) .  |

**Storage Buffer**

In 1x PBS, pH 7.4

**Storage Instruction**

Store at -20°C or lower. Aliquot to avoid repeated freezing and thawing.

## Applications

- Western Blot (Cell lysate)

ARMC6 monoclonal antibody (M03), clone 2H8. Western Blot analysis of ARMC6 expression in IMR-32.

[Protocol Download](#)

- Western Blot (Transfected lysate)

Western Blot analysis of ARMC6 expression in transfected 293T cell line by ARMC6 monoclonal antibody (M03), clone 2H8.

Lane 1: ARMC6 transfected lysate (Predicted MW: 51.5 KDa).

Lane 2: Non-transfected lysate.

[Protocol Download](#)

- Western Blot (Recombinant protein)

[Protocol Download](#)

- Immunoprecipitation

Immunoprecipitation of ARMC6 transfected lysate using anti-ARMC6 monoclonal antibody and Protein A Magnetic Bead, and immunoblotted with ARMC6 monoclonal antibody.

[Protocol Download](#)

- Sandwich ELISA (Recombinant protein)

Detection limit for recombinant GST tagged ARMC6 is 3 ng/ml as a capture antibody.

[Protocol Download](#)

- ELISA

## Gene Info — ARMC6

**Entrez GeneID**[93436](#)**GeneBank Accession#**[BC067125](#)**Protein Accession#**[AAH67125](#)

|                    |   |
|--------------------|---|
| Gene Name          | ARMC6   |
| Gene Alias         | MGC19595, R30923_1  |
| Gene Description   | armadillo repeat containing 6   |
| Gene Ontology      | <a href="#">Hyperlink</a>   |
| Gene Summary       | The function of this gene's protein product has not been determined. A related protein in mouse suggests that this protein has a conserved function. [provided by RefSeq] |
| Other Designations | -   |