

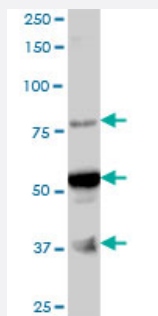
MaxPab®

ARMC6 MaxPab mouse polyclonal antibody (B01)

Catalog # H00093436-B01

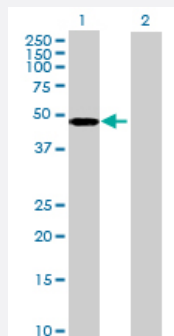
Size 50 uL

Applications



Western Blot (Tissue lysate)

ARMC6 MaxPab polyclonal antibody. Western Blot analysis of ARMC6 expression in human liver.



Western Blot (Transfected lysate)

Western Blot analysis of ARMC6 expression in transfected 293T cell line ([H00093436-T01](#)) by ARMC6 MaxPab polyclonal antibody.

Lane 1: ARMC6 transfected lysate(52.36 KDa).

Lane 2: Non-transfected lysate.

Specification

Product Description

Mouse polyclonal antibody raised against a full-length human ARMC6 protein.

Immunogen

ARMC6 (NP_219483, 1 a.a. ~ 476 a.a) full-length human protein.

Sequence

MVSKRIAQETFDAAVRENIEEFAMGPPEAVKEAVEQFESQGVDSLNVKTAPKVSADGSQEPTH
DILQMLSDLQESVASSRPQEV SAYLTRFCDQCKQDKACRFLAAQKGAYPIIFTAWKLATAGDQGL
LLQSLNALSVLTDGQPDLLDAQGLQLLVATLTQNADEADLTCSGIRCVRHACLKHEQNRQDLVKA
GVLPLLTGAITHHGHHTDVVREACWALRVMTFDDDIRVPFGHAHNHAKMIVQENKGLKVLIEATKA
FLDNPGILSELCGTLSRLAIRNEFCQEVVDLGGLSILVSLADCNHQMQRDQSGVQELVKQVLSTL
RAIAGNDDVKDAMRAGGTESVAAMTQHLTSPQVCEQSCAALCFLALRKPDNSRIVEGGGAVAA
LQAMKAHPQKAGVQKQACMLIRNLVAHGQAFSPILD LGAEALIMQARSAHRDCEDVAKAALRD
LGCHVELRELWTGQQRGNLAP

Host	Mouse
Reactivity	Human
Interspecies Antigen Sequence	Mouse (83); Rat (80)
Quality Control Testing	Antibody reactive against mammalian transfected lysate.
Storage Buffer	No additive
Storage Instruction	Store at -20°C or lower. Aliquot to avoid repeated freezing and thawing.
Note	For IHC and IF applications, antibody purification with Protein A will be needed prior to use.

Applications

- Western Blot (Tissue lysate)

ARMC6 MaxPab polyclonal antibody. Western Blot analysis of ARMC6 expression in human liver.

[Protocol Download](#)

- Western Blot (Transfected lysate)

Western Blot analysis of ARMC6 expression in transfected 293T cell line ([H00093436-T01](#)) by ARMC6 MaxPab polyclonal antibody.

Lane 1: ARMC6 transfected lysate(52.36 KDa).

Lane 2: Non-transfected lysate.

[Protocol Download](#)

Gene Info — ARMC6

Entrez GeneID	93436
GeneBank Accession#	NM_033415
Protein Accession#	NP_219483
Gene Name	ARMC6
Gene Alias	MGC19595, R30923_1
Gene Description	armadillo repeat containing 6
Gene Ontology	Hyperlink

Gene Summary

The function of this gene's protein product has not been determined. A related protein in mouse suggests that this protein has a conserved function. [provided by RefSeq]

Other Designations

-