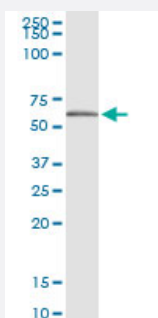


NAPRT1 (Human) IP-WB Antibody Pair

Catalog # H00093100-PW1

Size 1 Set

Applications



Immunoprecipitation of NAPRT1 transfected lysate using rabbit polyclonal anti-NAPRT1 and Protein A Magnetic Bead ([U0007](#)), and immunoblotted with mouse purified polyclonal anti-NAPRT1.

Specification

Product Description	This IP-WB antibody pair set comes with one antibody for immunoprecipitation and another to detect the precipitated protein in western blot.
Reactivity	Human
Interspecies Antigen Sequence	Mouse (86); Rat (83)
Quality Control Testing	Immunoprecipitation-Western Blot (IP-WB) Immunoprecipitation of NAPRT1 transfected lysate using rabbit polyclonal anti-NAPRT1 and Protein A Magnetic Bead (U0007), and immunoblotted with mouse purified polyclonal anti-NAPRT1.
Supplied Product	Antibody pair set content: 1. Antibody pair for IP: rabbit polyclonal anti-NAPRT1 (300 ul) 2. Antibody pair for WB: mouse purified polyclonal anti-NAPRT1 (50 ug)
Storage Instruction	Store reagents of the antibody pair set at -20°C or lower. Please aliquot to avoid repeated freeze thaw cycle. Reagents should be returned to -20°C storage immediately after use.

Applications

- Immunoprecipitation-Western Blot

[Protocol Download](#)

Gene Info — NAPRT1

Entrez GeneID [93100](#)

Gene Name NAPRT1

Gene Alias PP3856

Gene Description nicotinate phosphoribosyltransferase domain containing 1

Omim ID [611552](#)

Gene Ontology [Hyperlink](#)

Gene Summary Nicotinic acid (NA; niacin) is converted by nicotinic acid phosphoribosyltransferase (NAPRT; EC 2.4.2.11) to NA mononucleotide (NaMN), which is then converted to NA adenine dinucleotide (NaAD), and finally to nicotinamide adenine dinucleotide (NAD), which serves as a coenzyme in cellular redox reactions and is an essential component of a variety of processes in cellular metabolism including response to stress (Hara et al., 2007).[supplied by OMIM]

Other Designations nicotinic acid phosphoribosyltransferase