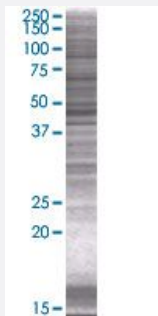


C20orf114 293T Cell Transient Overexpression Lysate(Denatured)

Catalog # H00092747-T01

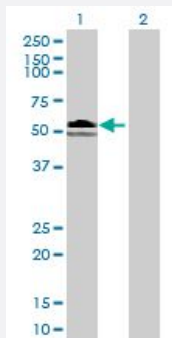
Size 100 uL

Applications



SDS-PAGE Gel

C20orf114 transfected lysate.



Western Blot

Lane 1: C20orf114 transfected lysate (52.4 KDa)

Lane 2: Non-transfected lysate.

Specification

Transfected Cell Line	293T
Plasmid	pCMV-C20orf114 full-length
Host	Human
Theoretical MW (kDa)	52.4
Interspecies Antigen Sequence	Mouse (59); Rat (57)

Quality Control Testing

Transient overexpression cell lysate was tested with Anti-C20orf114 antibody ([H00092747-B01](#)) by Western Blots.
SDS-PAGE Gel
C20orf114 transfected lysate.
Western Blot
Lane 1: C20orf114 transfected lysate (52.4 KDa)
Lane 2: Non-transfected lysate.

Storage Buffer

1X Sample Buffer (50 mM Tris-HCl, 2% SDS, 10% glycerol, 300 mM 2-mercaptoethanol, 0.01% Bromophenol blue)

Storage Instruction

Store at -80°C. Aliquot to avoid repeated freezing and thawing.

Applications

- Western Blot

Gene Info — C20orf114

Entrez GeneID

[92747](#)

GeneBank Accession#

[BC008429](#)

Protein Accession#

[AAH08429](#)

Gene Name

C20orf114

Gene Alias

LPLUNC1, MGC14597

Gene Description

chromosome 20 open reading frame 114

Gene Ontology

[Hyperlink](#)

Gene Summary

The protein encoded by this gene may be involved in the innate immune response to bacterial exposure in the mouth, nasal cavities, and lungs. The encoded protein is secreted and is a member of the BPI/LBP/PLUNC protein superfamily. This gene is found with other members of the superfamily in a cluster on chromosome 20. [provided by RefSeq]

Other Designations

LPLUNC1 protein|OTTHUMP00000030649|OTTHUMP00000043374|long palate, lung and nasal epithelium carcinoma associated 1|von Ebner minor salivary gland protein