

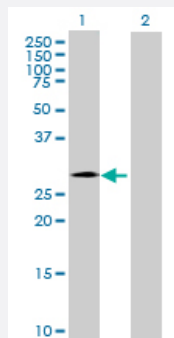
MaxPab®

# CHMP4C purified MaxPab mouse polyclonal antibody (B01P)

Catalog # H00092421-B01P

Size 50 ug

## Applications



### Western Blot (Transfected lysate)

Western Blot analysis of CHMP4C expression in transfected 293T cell line ([H00092421-T02](#)) by CHMP4C MaxPab polyclonal antibody.

Lane 1: CHMP4C transfected lysate(25.63 KDa).

Lane 2: Non-transfected lysate.

## Specification

Product Description	Mouse polyclonal antibody raised against a full-length human CHMP4C protein.
Immunogen	CHMP4C (NP_689497.1, 1 a.a. ~ 233 a.a) full-length human protein.
Sequence	MSKLGKFFKGGGSSKSRAAPSPQEALVRLRETEEMLGKKQEYLENRIQREIALAKKHGTQNKRA ALQALKRKRFEKQLTQIDGTLSTIEFQREALENSHTNTEVLRNMGFAAKAMKSVHENMDLNKIDD LMQEITEQQDIAQEISEAFSQRVGFDDFDEDELMAEELEEQEELNKKMTNIRLPNVPSSSLPA QPNRKPGMSSTARRSRAASSQRAEEEDDDIKQLAAWAT
Host	Mouse
Reactivity	Human
Interspecies Antigen Sequence	Mouse (84); Rat (85)
Quality Control Testing	Antibody reactive against mammalian transfected lysate.
Storage Buffer	In 1x PBS, pH 7.4
Storage Instruction	Store at -20°C or lower. Aliquot to avoid repeated freezing and thawing.

## Applications

- Western Blot (Transfected lysate)

Western Blot analysis of CHMP4C expression in transfected 293T cell line ([H00092421-T02](#)) by CHMP4C MaxPab polyclonal antibody.

Lane 1: CHMP4C transfected lysate(25.63 KDa).

Lane 2: Non-transfected lysate.

[Protocol Download](#)

## Gene Info — CHMP4C

Entrez GeneID [92421](#)

GeneBank Accession# [NM\\_152284](#)

Protein Accession# [NP\\_689497.1](#)

Gene Name CHMP4C

Gene Alias MGC22825, SNF7-3, Shax3

Gene Description chromatin modifying protein 4C

Omim ID [610899](#)

Gene Ontology [Hyperlink](#)

**Gene Summary** CHMP4C belongs to the chromatin-modifying protein/charged multivesicular body protein (CHMP ) family. These proteins are components of ESCRT-III (endosomal sorting complex required for transport III), a complex involved in degradation of surface receptor proteins and formation of endocytic multivesicular bodies (MVBs). Some CHMPs have both nuclear and cytoplasmic/vesicular distributions, and one such CHMP, CHMP1A (MIM 164010), is required for both MVB formation and regulation of cell cycle progression (Tsang et al., 2006 [PubMed 16730941]).[supplied by OMIM]

**Other Designations** Snf7 homologue associated with Alix 3

## Pathway

- [Endocytosis](#)