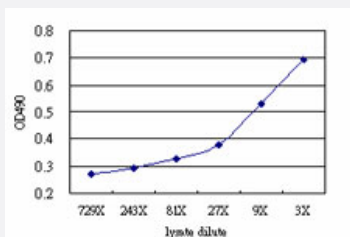


MRRF (Human) Matched Antibody Pair

Catalog # H00092399-AP51

Size 1 Set

Applications



Sandwich ELISA detection sensitivity ranging from approximately 27x to 3x dilution of the MRRF 293T overexpression lysate (non-denatured).

Specification

Product Description	This antibody pair set comes with a matched antibody pair to detect and quantify the protein level of human MRRF.
Reactivity	Human
Interspecies Antigen Sequence	Mouse (85); Rat (85)
Quality Control Testing	Standard curve using MRRF 293T overexpression lysate (non-denatured) as an analyte. Sandwich ELISA detection sensitivity ranging from approximately 27x to 3x dilution of the MRRF 293 T overexpression lysate (non-denatured).
Supplied Product	Antibody pair set content: 1. Capture antibody: mouse monoclonal anti-MRRF (100 ug) 2. Detection antibody: rabbit purified polyclonal anti-MRRF (50 ug) *Reagents are sufficient for at least 3-5 x 96 well plates using recommended protocols.
Storage Instruction	Store reagents of the antibody pair set at -20°C or lower. Please aliquot to avoid repeated freeze thaw cycle. Reagents should be returned to -20°C storage immediately after use.

Applications

- ELISA Pair (Transfected lysate)

[Protocol Download](#)

Gene Info — MRRF

Entrez GeneID [92399](#)

Gene Name MRRF

Gene Alias MRFF, MTRRF, RRF

Gene Description mitochondrial ribosome recycling factor

Omim ID [604602](#)

Gene Ontology [Hyperlink](#)

Other Designations OTTHUMP00000022037

Disease

- [Tobacco Use Disorder](#)