

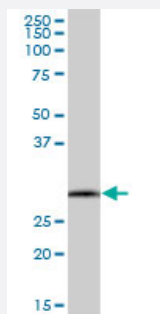
MaxPab®

SCYL1BP1 purified MaxPab mouse polyclonal antibody (B01P)

Catalog # H00092344-B01P

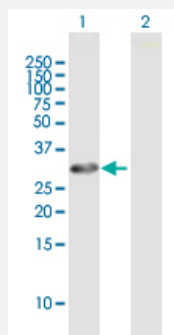
Size 50 ug

Applications



Western Blot (Tissue lysate)

SCYL1BP1 MaxPab polyclonal antibody. Western Blot analysis of SCYL1BP1 expression in human colon.

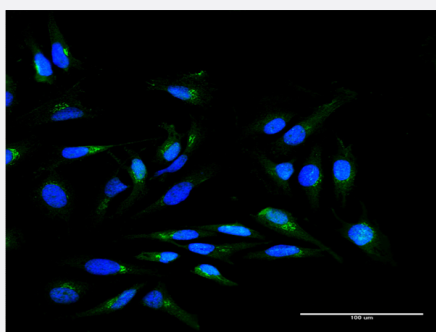


Western Blot (Transfected lysate)

Western Blot analysis of SCYL1BP1 expression in transfected 293T cell line ([H00092344-T01](#)) by SCYL1BP1 MaxPab polyclonal antibody.

Lane 1: SCYL1BP1 transfected lysate(27.06 KDa).

Lane 2: Non-transfected lysate.



Immunofluorescence

Immunofluorescence of purified MaxPab antibody to SCYL1BP1 on HeLa cell. [antibody concentration 10 ug/ml]

Specification

Product Description

Mouse polyclonal antibody raised against a full-length human SCYL1BP1 protein.

Immunogen	SCYL1BP1 (AAH64945.1, 1 a.a. ~ 246 a.a) full-length human protein.
Sequence	MSWAAVLAVAAARFGHFWGCRWPGPMAQGWAGFSEELRRLKQTKDPFEPQRRLPAAKKSQQ QLQREKALVEQSQKLGLQDGSTSLPEQLLSAPKQRVNVQKPPFSSPTLPSHFTLTSPVGDGQP QGIESQPKELGLENSHDGHNNVEILPPKPDCKLEKKKVELQEKSWEVLQQEQRLMEEKNKRRK ALLAKAIAERSKRTQAETMKLKRIQKELQALDDMVSADIGILNRIDQASLDYSYAR
Host	Mouse
Reactivity	Human
Interspecies Antigen Sequence	Mouse (82); Rat (84)
Quality Control Testing	Antibody reactive against mammalian transfected lysate.
Storage Buffer	In 1x PBS, pH 7.4
Storage Instruction	Store at -20°C or lower. Aliquot to avoid repeated freezing and thawing.

Applications

- Western Blot (Tissue lysate)

SCYL1BP1 MaxPab polyclonal antibody. Western Blot analysis of SCYL1BP1 expression in human colon.

[Protocol Download](#)

- Western Blot (Transfected lysate)

Western Blot analysis of SCYL1BP1 expression in transfected 293T cell line ([H00092344-T01](#)) by SCYL1BP1 MaxPab polyclonal antibody.

Lane 1: SCYL1BP1 transfected lysate(27.06 KDa).

Lane 2: Non-transfected lysate.

[Protocol Download](#)

- Immunofluorescence

Immunofluorescence of purified MaxPab antibody to SCYL1BP1 on HeLa cell. [antibody concentration 10 ug/ml]

Gene Info — SCYL1BP1

Entrez GeneID [92344](#)

GeneBank Accession# [BC064945](#)

Protein Accession#	AAH64945.1
Gene Name	SCYL1BP1
Gene Alias	FLJ11752, MGC51263, MGC70512, NTKL-BP1, NTKLBP1, RP11-54510.1
Gene Description	SCY1-like 1 binding protein 1
Omim ID	607983
Gene Ontology	Hyperlink
Gene Summary	<p>This gene encodes a member of the golgin family, a group of coiled-coil proteins localized to the Golgi. The encoded protein may function in the secretory pathway. The encoded protein, which also localizes to the cytoplasm, was identified by interactions with the N-terminal kinase-like protein, and thus it may function in mitosis. Mutations in this gene have been associated with geroderma osteodysplastica. Alternatively spliced transcript variants have been described. [provided by RefSeq]</p>
Other Designations	NTKL-binding protein 1 OTTHUMP00000033164