

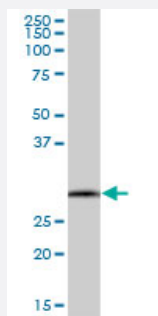
MaxPab®

# SCYL1BP1 MaxPab mouse polyclonal antibody (B01)

Catalog # H00092344-B01

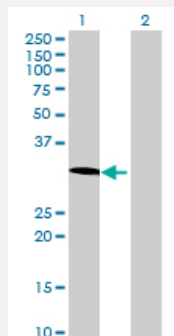
Size 50 uL

## Applications



### Western Blot (Tissue lysate)

SCYL1BP1 MaxPab polyclonal antibody. Western Blot analysis of SCYL1BP1 expression in human colon.

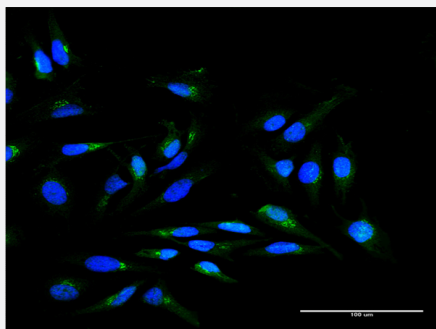


### Western Blot (Transfected lysate)

Western Blot analysis of SCYL1BP1 expression in transfected 293T cell line ([H00092344-T01](#)) by SCYL1BP1 MaxPab polyclonal antibody.

Lane 1: SCYL1BP1 transfected lysate(27.06 KDa).

Lane 2: Non-transfected lysate.



### Immunofluorescence

Immunofluorescence of purified MaxPab antibody to SCYL1BP1 on HeLa cell. [antibody concentration 10 ug/ml]

## Specification

### Product Description

Mouse polyclonal antibody raised against a full-length human SCYL1BP1 protein.

Immunogen	SCYL1BP1 (AAH64945, 1 a.a. ~ 246 a.a) full-length human protein.
Sequence	MSWAAVLAVAAARFGHFWGCRWPGPMAQGWAGFSEELRRLKQTKDPFEPQRRLPAKKSRQ QLQREKALVEQSQKLGLQDGSTSLLEQLLSAPKQRVNVQKPPFSSPTLPSHFTLTSPVGDGQP QGIESQPKELGLENSHDGHNNVEILPPKPDCKLEKKKVELQEKSWEVLQQEQRLMEEKNKRRK ALLAKAIAERSKRTQAETMKLKRIQKELQALDDMVSADIGILRNRIDQASLDYSYAR
Host	Mouse
Reactivity	Human
Interspecies Antigen Sequence	Mouse (82); Rat (84)
Quality Control Testing	Antibody reactive against mammalian transfected lysate.
Storage Buffer	No additive
Storage Instruction	Store at -20°C or lower. Aliquot to avoid repeated freezing and thawing.
Note	For IHC and IF applications, antibody purification with Protein A will be needed prior to use.

## Applications

- Western Blot (Tissue lysate)

SCYL1BP1 MaxPab polyclonal antibody. Western Blot analysis of SCYL1BP1 expression in human colon.

[Protocol Download](#)

- Western Blot (Transfected lysate)

Western Blot analysis of SCYL1BP1 expression in transfected 293T cell line ([H00092344-T01](#)) by SCYL1BP1 MaxPab polyclonal antibody.

Lane 1: SCYL1BP1 transfected lysate(27.06 KDa).

Lane 2: Non-transfected lysate.

[Protocol Download](#)

- Immunofluorescence

Immunofluorescence of purified MaxPab antibody to SCYL1BP1 on HeLa cell. [antibody concentration 10 ug/ml]

## Gene Info — SCYL1BP1

Entrez GeneID [92344](#)

GeneBank Accession#	<a href="#">BC064945</a>
Protein Accession#	<a href="#">AAH64945</a>
Gene Name	SCYL1BP1
Gene Alias	FLJ11752, MGC51263, MGC70512, NTKL-BP1, NTKLBP1, RP11-545110.1
Gene Description	SCY1-like 1 binding protein 1
Omim ID	<a href="#">607983</a>
Gene Ontology	<a href="#">Hyperlink</a>
Gene Summary	<p>This gene encodes a member of the golgin family, a group of coiled-coil proteins localized to the Golgi. The encoded protein may function in the secretory pathway. The encoded protein, which also localizes to the cytoplasm, was identified by interactions with the N-terminal kinase-like protein, and thus it may function in mitosis. Mutations in this gene have been associated with geroderma osteodysplastica. Alternatively spliced transcript variants have been described. [provided by RefSeq]</p>
Other Designations	NTKL-binding protein 1 OTTHUMP00000033164

## Publication Reference

- [SCYL1 binding protein 1 promotes the ubiquitin-dependent degradation of Pirh2 and has tumor-suppressive function in the development of hepatocellular carcinoma.](#)

Hu L, Liu M, Chen L, Chan TH, Wang J, Huo KK, Zheng BJ, Xie D, Guan XY.

Carcinogenesis 2012 Aug; 33(8):1581.

Application: IHC-P, WB, Human, Human hepatocellular carcinoma