

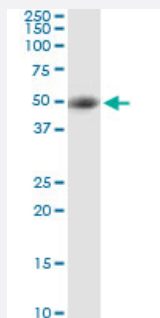
MaxPab®

# STRADA MaxPab rabbit polyclonal antibody (D01)

Catalog # H00092335-D01

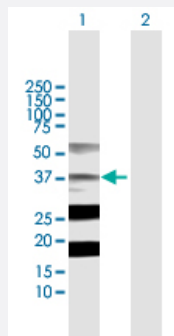
Size 100 uL

## Applications



### Western Blot (Tissue lysate)

STRADA MaxPab rabbit polyclonal antibody. Western Blot analysis of STRADA expression in human kidney.

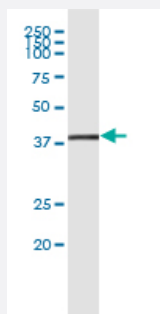


### Western Blot (Transfected lysate)

Western Blot analysis of STRADA expression in transfected 293T cell line ([H00092335-T01](#)) by STRADA MaxPab polyclonal antibody.

Lane 1: STRADA transfected lysate(38.6 KDa).

Lane 2: Non-transfected lysate.



### Immunoprecipitation

Immunoprecipitation of STRADA transfected lysate using anti-STRADA MaxPab rabbit polyclonal antibody and Protein A Magnetic Bead, and immunoblotted with STRADA purified MaxPab mouse polyclonal antibody (B01P) ([H00092335-B01P](#)).

## Specification

### Product Description

Rabbit polyclonal antibody raised against a full-length human STRADA protein.

<b>Immunogen</b>	STRADA (NP_699166.2, 1 a.a. ~ 348 a.a) full-length human protein.
<b>Sequence</b>	MSFLTNDASSESIASFQEVMSFLPEGGCYELLTVIGKGFEDLMTVNLARYKPTGEYVTVRRIN LEACSNEMVTFLQGELHVSKLFNHPNIVPYRATFIADNELWVVTSMAYGSAKDLICHTFMDGMN ELAIAYLQGVKALDYIHHMGYVHRSVKASHILISVDGKVYLSGLRSNLSMISHGQRQRVVHDFPKY SVKVLPLWLSPEVLQQNLQGYDAKSDIYSGITACELANGHVPFKDMPATQMLLEKLNQTVPCLLD TSTIPAEELTMSPSRSVANSGLSDSLTTSTPRPSNGDSPSHPHYRTFSPHFHHFVEQCLQRNPDA RYPGWPGPGLRESRGCSGG
<b>Host</b>	Rabbit
<b>Reactivity</b>	Human
<b>Interspecies Antigen Sequence</b>	Mouse (94)
<b>Quality Control Testing</b>	Antibody reactive against mammalian transfected lysate.
<b>Storage Buffer</b>	No additive
<b>Storage Instruction</b>	Store at -20°C or lower. Aliquot to avoid repeated freezing and thawing.

## Applications

- Western Blot (Tissue lysate)

STRADA MaxPab rabbit polyclonal antibody. Western Blot analysis of STRADA expression in human kidney.

[Protocol Download](#)

- Western Blot (Transfected lysate)

Western Blot analysis of STRADA expression in transfected 293T cell line ([H00092335-T01](#)) by STRADA MaxPab polyclonal antibody.

Lane 1: STRADA transfected lysate(38.6 KDa).

Lane 2: Non-transfected lysate.

[Protocol Download](#)

- Immunoprecipitation

Immunoprecipitation of STRADA transfected lysate using anti-STRADA MaxPab rabbit polyclonal antibody and Protein A Magnetic Bead, and immunoblotted with STRADA purified MaxPab mouse polyclonal antibody (B01P) ([H00092335-B01P](#)).

[Protocol Download](#)

## Gene Info — STRADA

Entrez GeneID	<a href="#">92335</a>
GeneBank Accession#	<a href="#">NM_153335</a>
Protein Accession#	<a href="#">NP_699166.2</a>
Gene Name	STRADA
Gene Alias	FLJ90524, LYK5, NY-BR-96, PMSE, STRAD, Stik
Gene Description	STE20-related kinase adaptor alpha
Omim ID	<a href="#">608626 611087</a>
Gene Ontology	<a href="#">Hyperlink</a>
Gene Summary	<p>The protein encoded by this gene contains a STE20-like kinase domain, but lacks several residues that are critical for catalytic activity, so it is termed a 'pseudokinase'. The protein forms a heterotrimeric complex with serine/threonine kinase 11 (STK11, also known as LKB1) and the scaffolding protein calcium binding protein 39 (CAB39, also known as MO25). The protein activates STK11 leading to the phosphorylation of both proteins and excluding STK11 from the nucleus. The protein is necessary for STK11-induced G1 cell cycle arrest. A mutation in this gene has been shown to result in polyhydramnios, megalencephaly, and symptomatic epilepsy (PMSE) syndrome. Multiple transcript variants encoding different isoforms have been found for this gene. Additional transcript variants have been described but their full-length nature is not known. [provided by RefSeq]</p>
Other Designations	STE20-like pseudokinase STE20-related adaptor protein protein kinase LYK5

## Pathway

- [mTOR signaling pathway](#)