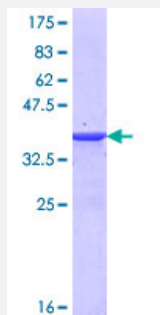


MLCK (Human) Recombinant Protein (Q01)

Catalog # H00091807-Q01

Size 25 ug, 10 ug

Applications



Specification

Product Description	Human MLCK partial ORF (NP_872299.1, 1 a.a. - 100 a.a.) recombinant protein with GST-tag at N-terminal.
Sequence	MDTKLNMLNEKVDQLLHFQEDVTEKLQSMCRDMGHLERGLHRLEASRAPGPGGADGVPHIDTQ AGWPEVLELV RAMQQDAAQHGARLEALFRMVA AVDRA
Host	Wheat Germ (in vitro)
Theoretical MW (kDa)	36.74
Interspecies Antigen Sequence	Mouse (69); Rat (68)
Preparation Method	in vitro wheat germ expression system
Purification	Glutathione Sepharose 4 Fast Flow
Quality Control Testing	12.5% SDS-PAGE Stained with Coomassie Blue.
Storage Buffer	50 mM Tris-HCl, 10 mM reduced Glutathione, pH=8.0 in the elution buffer.
Storage Instruction	Store at -80°C. Aliquot to avoid repeated freezing and thawing.
Note	Best use within three months from the date of receipt of this protein.

Applications

- Enzyme-linked Immunoabsorbent Assay
- Western Blot (Recombinant protein)
- Antibody Production
- Protein Array

Gene Info — MYLK3

Entrez GeneID [91807](#)

GeneBank Accession# [NM_182493](#)

Protein Accession# [NP_872299.1](#)

Gene Name MYLK3

Gene Alias MGC126319, MGC126320, MLCK, MLCK2, caMLCK

Gene Description myosin light chain kinase 3

Gene Ontology [Hyperlink](#)

Gene Summary Phosphorylation of cardiac myosin heavy chains (see MYH7B, MIM 609928) and light chains (see MYL2, MIM 160781) by a kinase, such as MYLK3, potentiates the force and rate of cross-bridge recruitment in cardiac myocytes (Chan et al., 2008 [PubMed 18202317]).[supplied by OMIM]

Other Designations MLC kinase|cardiac-MyBP-C associated Ca/CaM kinase

Pathway

- [Calcium signaling pathway](#)
- [Focal adhesion](#)
- [Regulation of actin cytoskeleton](#)
- [Vascular smooth muscle contraction](#)