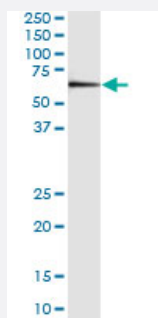


LOC91614 monoclonal antibody (M01), clone 4D9

Catalog # H00091614-M01

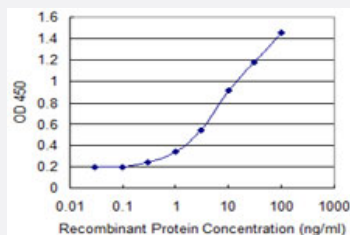
Size 100 ug

Applications



Immunoprecipitation

Immunoprecipitation of DEPDC7 transfected lysate using anti-DEPDC7 monoclonal antibody and Protein A Magnetic Bead, and immunoblotted with DEPDC7 MaxPab rabbit polyclonal antibody.



Sandwich ELISA (Recombinant protein)

Detection limit for recombinant GST tagged DEPDC7 is 0.1 ng/ml as a capture antibody.

Specification

Product Description	Mouse monoclonal antibody raised against a partial recombinant LOC91614.
Immunogen	LOC91614 (NP_631899, 393 a.a. ~ 499 a.a) partial recombinant protein with GST tag. MW of the GST tag alone is 26 KDa.
Sequence	NPSEFKLQKESDNRMVVKRIFSKAIVDNKNLSKGKTDLLVFLMDHQKDVFKIPGTLHKIVSVKLM AIQNGRDPNIRDAGYIYCQRIDQRDYSNNTEKTTKDELLNLL
Host	Mouse
Reactivity	Human

Interspecies Antigen Sequence	Mouse (81); Rat (84)
Isotype	IgG2a Kappa
Quality Control Testing	Antibody Reactive Against Recombinant Protein.
Storage Buffer	In 1x PBS, pH 7.4
Storage Instruction	Store at -20°C or lower. Aliquot to avoid repeated freezing and thawing.

Applications

- Immunoprecipitation

Immunoprecipitation of DEPDC7 transfected lysate using anti-DEPDC7 monoclonal antibody and Protein A Magnetic Bead, and immunoblotted with DEPDC7 MaxPab rabbit polyclonal antibody.

[Protocol Download](#)

- Sandwich ELISA (Recombinant protein)

Detection limit for recombinant GST tagged DEPDC7 is 0.1 ng/ml as a capture antibody.

[Protocol Download](#)

- ELISA

Gene Info — DEPDC7

Entrez GeneID	91614
GeneBank Accession#	NM_139160
Protein Accession#	NP_631899
Gene Name	DEPDC7
Gene Alias	TR2, dJ85M6.4
Gene Description	DEP domain containing 7
Gene Ontology	Hyperlink
Other Designations	dJ85M6.4 (novel 58.3 KDA protein) novel 58.3 KDA protein