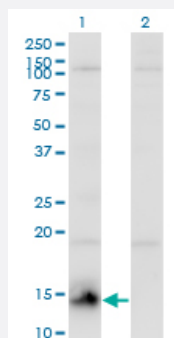


# CHURC1 monoclonal antibody (M01), clone 2F9

Catalog # H00091612-M01

Size 100 ug

## Applications

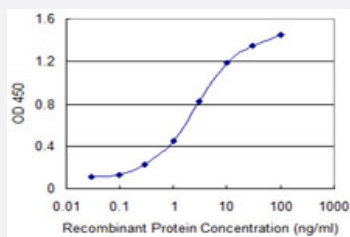


### Western Blot (Transfected lysate)

Western Blot analysis of CHURC1 expression in transfected 293T cell line by CHURC1 monoclonal antibody (M01), clone 2F9.

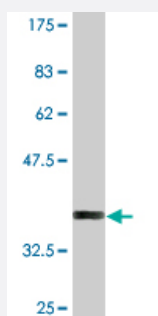
Lane 1: CHURC1 transfected lysate(13 KDa).

Lane 2: Non-transfected lysate.



### Sandwich ELISA (Recombinant protein)

Detection limit for recombinant GST tagged CHURC1 is 0.03 ng/ml as a capture antibody.



Western Blot detection against Immunogen (38.06 KDa) .

## Specification

### Product Description

Mouse monoclonal antibody raised against a full-length recombinant CHURC1.

|                                      |  |
|--------------------------------------|--|
| <b>Immunogen</b>                     | CHURC1 (AAH20550, 1 a.a. ~ 112 a.a) full-length recombinant protein with GST tag. MW of the GST tag alone is 26 KDa. |
| <b>Sequence</b>                      | MCGDCVGKEYPNRGNTCLENGSFLNFTGCAVCSKRDFMLITNKSLEEDGGEENTYDHLCKNC<br>HHVIARHEYTFSIMDEFQEYTMLCLLCGKAEDTISILPDDPRQMTLLF   |
| <b>Host</b>                          | Mouse  |
| <b>Reactivity</b>                    | Human  |
| <b>Interspecies Antigen Sequence</b> | Mouse (96); Rat (96)   |
| <b>Isotype</b>                       | IgG2a Kappa  |
| <b>Quality Control Testing</b>       | Antibody Reactive Against Recombinant Protein.<br>Western Blot detection against Immunogen (38.06 KDa) .             |
| <b>Storage Buffer</b>                | In 1x PBS, pH 7.4  |
| <b>Storage Instruction</b>           | Store at -20°C or lower. Aliquot to avoid repeated freezing and thawing.   |

## Applications

- Western Blot (Transfected lysate)

Western Blot analysis of CHURC1 expression in transfected 293T cell line by CHURC1 monoclonal antibody (M01), clone 2F9.

Lane 1: CHURC1 transfected lysate(13 KDa).

Lane 2: Non-transfected lysate.

[Protocol Download](#)

- Western Blot (Recombinant protein)

[Protocol Download](#)

- Sandwich ELISA (Recombinant protein)

Detection limit for recombinant GST tagged CHURC1 is 0.03 ng/ml as a capture antibody.

[Protocol Download](#)

- ELISA

## Gene Info — CHURC1

|                     |                                 |
|---------------------|---------------------------------|
| Entrez GeneID       | <a href="#">91612</a>           |
| GeneBank Accession# | <a href="#">BC020550</a>        |
| Protein Accession#  | <a href="#">AAH20550</a>        |
| Gene Name           | CHURC1                          |
| Gene Alias          | C14orf52, FLJ33064, My015, chch |
| Gene Description    | churchill domain containing 1   |
| Omim ID             | <a href="#">608577</a>          |
| Gene Ontology       | <a href="#">Hyperlink</a>       |
| Other Designations  | -                               |