

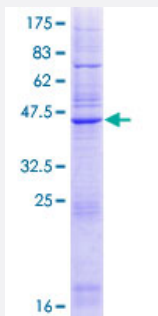
Full-Length

DERL3 (Human) Recombinant Protein (P01)

Catalog # H00091319-P01

Size 25 ug, 10 ug

Applications



Specification

Product Description	Human DERL3 full-length ORF (NP_940842.2, 1 a.a. - 205 a.a.) recombinant protein with GST-tag at N-terminal.
Sequence	MAWQGLAAEFLQVPAVTRAYTAACVLTTAAVQLELLSPFQLYFNPHLVFRKFQVWRLVTNFLFFG PLGFSFFFNMLFVFRYCRMLEEGSFRGRTADFVFMFLFGGVLMTLLGLLGSLFFLGQALMAMLVY VWSRRSPRVRVNFFGLLTFQAPFLPWALMGFSLLLGNLSILVDLLGIAVGHIIYFLEDVFPNQPGGK RLLQTPGFL
Host	Wheat Germ (in vitro)
Theoretical MW (kDa)	49.8
Interspecies Antigen Sequence	Mouse (92); Rat (92)
Preparation Method	in vitro wheat germ expression system
Purification	Glutathione Sepharose 4 Fast Flow
Quality Control Testing	12.5% SDS-PAGE Stained with Coomassie Blue.
Storage Buffer	50 mM Tris-HCl, 10 mM reduced Glutathione, pH=8.0 in the elution buffer.
Storage Instruction	Store at -80°C. Aliquot to avoid repeated freezing and thawing.

Note

Best use within three months from the date of receipt of this protein.

Applications

- Enzyme-linked Immunoabsorbent Assay
- Western Blot (Recombinant protein)
- Antibody Production
- Protein Array

Gene Info — DERL3

Entrez GeneID [91319](#)**GeneBank Accession#** [NM_198440.2](#)**Protein Accession#** [NP_940842.2](#)**Gene Name** DERL3**Gene Alias** C22orf14, IZP6, LLN2, MGC71803, derlin-3**Gene Description** Der1-like domain family, member 3**Omim ID** [610305](#)**Gene Ontology** [Hyperlink](#)

Gene Summary The protein encoded by this gene belongs to the derlin family, and resides in the endoplasmic reticulum (ER). Proteins that are unfolded or misfolded in the ER must be refolded or degraded to maintain the homeostasis of the ER. This protein appears to be involved in the degradation of misfolded glycoproteins in the ER. Several alternatively spliced transcript variants encoding different isoforms have been identified for this gene. [provided by RefSeq]

Other Designations DERtrin 3|der1-like protein 3|derlin 3