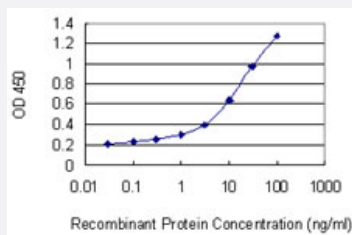


SLC39A13 monoclonal antibody (M03), clone 2G2

Catalog # H00091252-M03

Size 100 ug

Applications



Sandwich ELISA (Recombinant protein)

Detection limit for recombinant GST tagged SLC39A13 is 0.03 ng/ml as a capture antibody.

Specification

Product Description	Mouse monoclonal antibody raised against a partial recombinant SLC39A13.
Immunogen	SLC39A13 (NP_689477.2, 170 a.a. ~ 226 a.a) partial recombinant protein with GST tag. MW of the GST tag alone is 26 KDa.
Sequence	LDSKEEGTSQAPNKDPTAAAAALNGGHCLAQPAAEPGLGAVVRSIKVSGYLNLLANT
Host	Mouse
Reactivity	Human
Isotype	IgG1 Kappa
Quality Control Testing	Antibody Reactive Against Recombinant Protein.
Storage Buffer	In 1x PBS, pH 7.4
Storage Instruction	Store at -20°C or lower. Aliquot to avoid repeated freezing and thawing.

Applications

- Sandwich ELISA (Recombinant protein)

Detection limit for recombinant GST tagged SLC39A13 is 0.03 ng/ml as a capture antibody.

[Protocol Download](#)

- ELISA

Gene Info — SLC39A13

Entrez GeneID [91252](#)

GeneBank Accession# [NM_152264](#)

Protein Accession# [NP_689477.2](#)

Gene Name SLC39A13

Gene Alias FLJ25785

Gene Description solute carrier family 39 (zinc transporter), member 13

Omim ID [608735](#)

Gene Ontology [Hyperlink](#)

Gene Summary Zinc is an essential cofactor for hundreds of enzymes. It is involved in protein, nucleic acid, carbohydrate, and lipid metabolism, as well as in the control of gene transcription, growth, development, and differentiation. SLC39A13 belongs to a subfamily of proteins that show structural characteristics of zinc transporters (Taylor and Nicholson, 2003 [PubMed 12659941]).[supplied by OMIM]

Other Designations solute carrier family 39 (metal ion transporter), member 13

Disease

- [Genetic Predisposition to Disease](#)
- [Prostatic Neoplasms](#)