

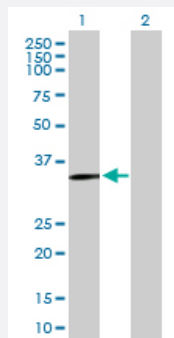
MaxPab®

SLC39A13 purified MaxPab mouse polyclonal antibody (B01P)

Catalog # H00091252-B01P

Size 50 ug

Applications



Western Blot (Transfected lysate)

Western Blot analysis of SLC39A13 expression in transfected 293T cell line ([H00091252-T01](#)) by SLC39A13 MaxPab polyclonal antibody.

Lane 1: SLC39A13 transfected lysate(38.40 KDa).

Lane 2: Non-transfected lysate.

Specification

Product Description	Mouse polyclonal antibody raised against a full-length human SLC39A13 protein.
Immunogen	SLC39A13 (NP_689477.2, 1 a.a. ~ 364 a.a) full-length human protein.
Sequence	MPGCPCPGCGMAGPRLLFLTALALELLGRAGGSQPALRSRGTTACRLDNKESESWGALLSGE RLDTWICSLLGSLMVGLSGVFLLVIPLEMGTMRLRSEAGAWRLKQLLSFALGGLLGNVFLHLLPEA WAYTCSASPGGEGQSLQQQQLGLWVIAGILTFLEKMFLLDSKEEGTSQAPNKDPTAAAAALN GGHCLAQPAAEPGLGAVVRSIKVSGYLNLLANTIDNFTHGLAVAASFLVSKKIGLLTMAILLHEIPH EVGDFAILLRAGFDRWSAAKLQLSTALGGLLGAGFAICTQSPKGVEETAAWVLPFTSGGFLYALV NVLPDLLLEEDPWRSLLQQLLLLCAGIVVMVLFSLFVD
Host	Mouse
Reactivity	Human
Quality Control Testing	Antibody reactive against mammalian transfected lysate.
Storage Buffer	In 1x PBS, pH 7.4
Storage Instruction	Store at -20°C or lower. Aliquot to avoid repeated freezing and thawing.

Applications

- Western Blot (Transfected lysate)

Western Blot analysis of SLC39A13 expression in transfected 293T cell line ([H00091252-T01](#)) by SLC39A13 MaxPab polyclonal antibody.

Lane 1: SLC39A13 transfected lysate(38.40 KDa).

Lane 2: Non-transfected lysate.

[Protocol Download](#)

Gene Info — SLC39A13

Entrez GeneID	91252
---------------	-----------------------

GeneBank Accession#	NM_152264
---------------------	---------------------------

Protein Accession#	NP_689477.2
--------------------	-----------------------------

Gene Name	SLC39A13
-----------	----------

Gene Alias	FLJ25785
------------	----------

Gene Description	solute carrier family 39 (zinc transporter), member 13
------------------	--

Omim ID	608735
---------	------------------------

Gene Ontology	Hyperlink
---------------	---------------------------

Gene Summary	Zinc is an essential cofactor for hundreds of enzymes. It is involved in protein, nucleic acid, carbohydrate, and lipid metabolism, as well as in the control of gene transcription, growth, development, and differentiation. SLC39A13 belongs to a subfamily of proteins that show structural characteristics of zinc transporters (Taylor and Nicholson, 2003 [PubMed 12659941]).[supplied by OMIM]
--------------	--

Other Designations	solute carrier family 39 (metal ion transporter), member 13
--------------------	---

Disease

- [Genetic Predisposition to Disease](#)
- [Prostatic Neoplasms](#)