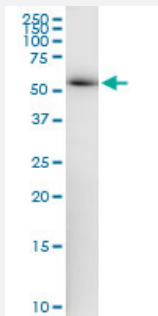


# ZNF622 (Human) IP-WB Antibody Pair

Catalog # H00090441-PW1

Size 1 Set

## Applications



Immunoprecipitation of ZNF622 transfected lysate using rabbit polyclonal anti-ZNF622 and Protein A Magnetic Bead ([U0007](#)), and immunoblotted with mouse polyclonal anti-ZNF622.

## Specification

<b>Product Description</b>	This IP-WB antibody pair set comes with one antibody for immunoprecipitation and another to detect the precipitated protein in western blot.
<b>Reactivity</b>	Human
<b>Interspecies Antigen Sequence</b>	Mouse (81); Rat (87)
<b>Quality Control Testing</b>	Immunoprecipitation-Western Blot (IP-WB) Immunoprecipitation of ZNF622 transfected lysate using rabbit polyclonal anti-ZNF622 and Protein A Magnetic Bead ( <a href="#">U0007</a> ), and immunoblotted with mouse polyclonal anti-ZNF622.
<b>Supplied Product</b>	Antibody pair set content: 1. Antibody pair for IP: rabbit polyclonal anti-ZNF622 (300 ul) 2. Antibody pair for WB: mouse polyclonal anti-ZNF622 (50 ul)
<b>Storage Instruction</b>	Store reagents of the antibody pair set at -20°C or lower. Please aliquot to avoid repeated freeze thaw cycle. Reagents should be returned to -20°C storage immediately after use.

## Applications

- Immunoprecipitation-Western Blot

[Protocol Download](#)

## Gene Info — ZNF622

Entrez GeneID	<a href="#">90441</a>
Gene Name	ZNF622
Gene Alias	MGC17552, MGC2485, ZPR9
Gene Description	zinc finger protein 622
Omim ID	<a href="#">608694</a>
Gene Ontology	<a href="#">Hyperlink</a>
Other Designations	zinc finger-like protein 9