

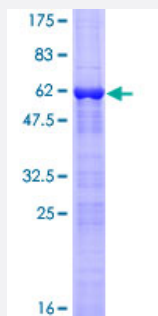
Full-Length

TGIF2LX (Human) Recombinant Protein (P01)

Catalog # H00090316-P01

Size 25 ug, 10 ug

Applications



Specification

Product Description	Human TGIF2LX full-length ORF (NP_620410.3, 1 a.a. - 241 a.a.) recombinant protein with GST-tag at N-terminal.
Sequence	MEAAADGPAETQSPVEKDSPAQTQSPAQDTSIMSRNNADTGRVLALPEHKKKRGKGNLPAESVKI LRDWMYKHRFKAYPSEEEKQMLSEKTNLSLLQISNWFINARRRILPDMLQQRNDPIIGHKTGKDA HATHLQSTEASVPAKSGPSGPDNVQSLPLWPLPKGQMSREKQPDPEAPSQKLTGIAQPKKKV KVSVTSPSSPELVSPEEHADFFSFLLLVDAAVQRAAELELEKKQEPNP
Host	Wheat Germ (in vitro)
Theoretical MW (kDa)	53.1
Interspecies Antigen Sequence	Mouse (46)
Preparation Method	in vitro wheat germ expression system
Purification	Glutathione Sepharose 4 Fast Flow
Quality Control Testing	12.5% SDS-PAGE Stained with Coomassie Blue.
Storage Buffer	50 mM Tris-HCl, 10 mM reduced Glutathione, pH=8.0 in the elution buffer.
Storage Instruction	Store at -80°C. Aliquot to avoid repeated freezing and thawing.

Note

Best use within three months from the date of receipt of this protein.

Applications

- Enzyme-linked Immunoabsorbent Assay
- Western Blot (Recombinant protein)
- Antibody Production
- Protein Array

Gene Info — TGIF2LX

Entrez GeneID [90316](#)

GeneBank Accession# [NM_138960.3](#)

Protein Accession# [NP_620410.3](#)

Gene Name TGIF2LX

Gene Alias MGC34726, TGIFLX

Gene Description TGFB-induced factor homeobox 2-like, X-linked

Omim ID [300411](#)

Gene Ontology [Hyperlink](#)

Gene Summary This gene encodes a member of the TALE/TGIF homeobox family of transcription factors. Testis-specific expression suggests that this gene may play a role in spermatogenesis. A homolog of this gene lies within the male specific region of chromosome Y, in a block of sequence that is thought to be the result of a large X-to-Y transposition. [provided by RefSeq]

Other Designations OTTHUMP00000023636|TGF(beta)-induced transcription factor 2-like|TGFB-induced factor 2-like, X-linked