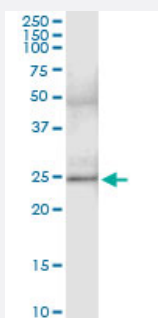


CEACAM21 (Human) IP-WB Antibody Pair

Catalog # H00090273-PW1

Size 1 Set

Applications



Immunoprecipitation of CEACAM21 transfected lysate using rabbit polyclonal anti-CEACAM21 and Protein A Magnetic Bead ([U0007](#)), and immunoblotted with mouse polyclonal anti-CEACAM21.

Specification

Product Description	This IP-WB antibody pair set comes with one antibody for immunoprecipitation and another to detect the precipitated protein in western blot.
Reactivity	Human
Quality Control Testing	Immunoprecipitation-Western Blot (IP-WB) Immunoprecipitation of CEACAM21 transfected lysate using rabbit polyclonal anti-CEACAM21 and Protein A Magnetic Bead (U0007), and immunoblotted with mouse polyclonal anti-CEACAM21.
Supplied Product	Antibody pair set content: 1. Antibody pair for IP: rabbit polyclonal anti-CEACAM21 (300 ul) 2. Antibody pair for WB: mouse polyclonal anti-CEACAM21 (50 ul)
Storage Instruction	Store reagents of the antibody pair set at -20°C or lower. Please aliquot to avoid repeated freeze thaw cycle. Reagents should be returned to -20°C storage immediately after use.

Applications

- Immunoprecipitation-Western Blot

[Protocol Download](#)

Gene Info — CEACAM21

Entrez GeneID	90273
---------------	-----------------------

Gene Name	CEACAM21
-----------	----------

Gene Alias	CEACAM3, FLJ13540, MGC119874, R29124_1
------------	--

Gene Description	carcinoembryonic antigen-related cell adhesion molecule 21
------------------	--

Gene Ontology	Hyperlink
---------------	---------------------------

Other Designations	carcinoembryonic antigen-related cell adhesion molecule
--------------------	---