

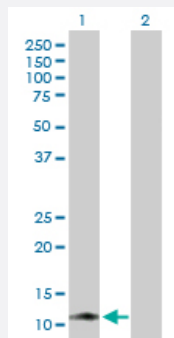
MaxPab®

# KIR3DX1 purified MaxPab mouse polyclonal antibody (B01P)

Catalog # H00090011-B01P

Size 50 ug

## Applications



### Western Blot (Transfected lysate)

Western Blot analysis of KIR3DX1 expression in transfected 293T cell line ([H00090011-T02](#)) by KIR3DX1 MaxPab polyclonal antibody.

Lane 1: FLJ00060 transfected lysate(8.58 KDa).

Lane 2: Non-transfected lysate.

## Specification

<b>Product Description</b>	Mouse polyclonal antibody raised against a full-length human KIR3DX1 protein.
<b>Immunogen</b>	KIR3DX1 (AAH33195.1, 1 a.a. ~ 78 a.a) full-length human protein.
<b>Sequence</b>	MANTEPTGQRTDEEEPAAEETQEIIYAQLNHQALSQTGFPPASQCAPHYLSYDPSMTVHQAQAE ARAAPSLWHKGH
<b>Host</b>	Mouse
<b>Reactivity</b>	Human
<b>Quality Control Testing</b>	Antibody reactive against mammalian transfected lysate.
<b>Storage Buffer</b>	In 1x PBS, pH 7.4
<b>Storage Instruction</b>	Store at -20°C or lower. Aliquot to avoid repeated freezing and thawing.

## Applications

- Western Blot (Transfected lysate)

Western Blot analysis of KIR3DX1 expression in transfected 293T cell line ([H00090011-T02](#)) by KIR3DX1 MaxPab polyclonal antibody.

Lane 1: FLJ00060 transfected lysate(8.58 KDa).

Lane 2: Non-transfected lysate.

[Protocol Download](#)

## Gene Info — KIR3DX1

Entrez GeneID	<a href="#">90011</a>
---------------	-----------------------

GeneBank Accession#	<a href="#">BC033195.1</a>
---------------------	----------------------------

Protein Accession#	<a href="#">AAH33195.1</a>
--------------------	----------------------------

Gene Name	KIR3DX1
-----------	---------

Gene Alias	FLJ00060, KIR3DL0, LENG12
------------	---------------------------

Gene Description	killer cell immunoglobulin-like receptor, three domains, X1
------------------	---

Gene Ontology	<a href="#">Hyperlink</a>
---------------	---------------------------

Gene Summary	three domains
--------------	---------------

Other Designations	immunoglobulin-like receptor KIR3DL0 leukocyte receptor cluster (LRC) member 12
--------------------	---