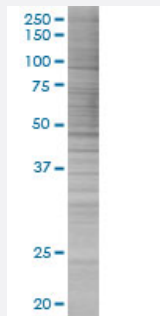


LHX4 293T Cell Transient Overexpression Lysate(Denatured)

Catalog # H00089884-T01

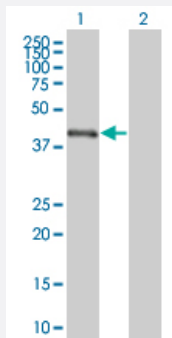
Size 100 uL

Applications



SDS-PAGE Gel

LHX4 transfected lysate.



Western Blot

Lane 1: LHX4 transfected lysate (43.01 KDa)

Lane 2: Non-transfected lysate.

Specification

| | |
|-------------------------------|-----------------------|
| Transfected Cell Line | 293T |
| Plasmid | pCMV-LHX4 full-length |
| Host | Human |
| Theoretical MW (kDa) | 43.01 |
| Interspecies Antigen Sequence | Mouse (99); Rat (98) |

Quality Control Testing

Transient overexpression cell lysate was tested with Anti-LHX4 antibody ([H00089884-B01](#)) by Western Blots.
 SDS-PAGE Gel
 LHX4 transfected lysate.
 Western Blot
 Lane 1: LHX4 transfected lysate (43.01 KDa)
 Lane 2: Non-transfected lysate.

Storage Buffer

1X Sample Buffer (50 mM Tris-HCl, 2% SDS, 10% glycerol, 300 mM 2-mercaptoethanol, 0.01% Bromophenol blue)

Storage Instruction

Store at -80°C. Aliquot to avoid repeated freezing and thawing.

Applications

- Western Blot

Gene Info — LHX4

Entrez GeneID

[89884](#)

GeneBank Accession#

[NM_033343.2](#)

Protein Accession#

-

Gene Name

LHX4

Gene Alias

Gsh-4, Gsh4

Gene Description

LIM homeobox 4

Omim ID

[602146 606606](#)

Gene Ontology

[Hyperlink](#)

Gene Summary

This gene encodes a member of a large protein family which contains the LIM domain, a unique cysteine-rich zinc-binding domain. The encoded protein may function as a transcriptional regulator and be involved in control of differentiation and development of the pituitary gland. Mutations in this gene are associated with syndromic short stature and pituitary and hindbrain defects. An alternative splice variant has been described but its biological nature has not been determined. [provided by RefSeq]

Other Designations

LIM homeobox protein 4|OTTHUMP00000033083

Disease

- [Hypopituitarism](#)