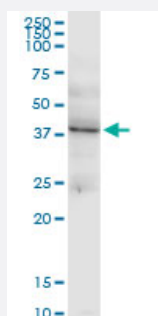


# LHX4 monoclonal antibody (M32), clone 4F6

Catalog # H00089884-M32

Size 100 ug

## Applications



### Western Blot (Tissue lysate)

LHX4 monoclonal antibody (M32), clone 4F6. Western Blot analysis of LHX4 expression in human pancreas.



Western Blot detection against Immunogen (37 kDa) .

## Specification

<b>Product Description</b>	Mouse monoclonal antibody raised against a partial recombinant LHX4.
<b>Immunogen</b>	LHX4 (NP_203129, 291 a.a. ~ 390 a.a) partial recombinant protein with GST tag. MW of the GST tag alone is 26 kDa.
<b>Sequence</b>	SMDGTGQSYQDLRDGSPYGIQSPSSISLPSHAPLLNGLDYTVDSNLGIAHAGQGVSQTLRAMA GGPTSDISTGSSVGYPDFPTSPGSWLDEMDHPPF
<b>Host</b>	Mouse
<b>Reactivity</b>	Human

Interspecies Antigen Sequence	Mouse (98); Rat (95)
Isotype	IgG2b Kappa
Quality Control Testing	Antibody Reactive Against Recombinant Protein. Western Blot detection against Immunogen (37 KDa) .
Storage Buffer	In 1x PBS, pH 7.4
Storage Instruction	Store at -20°C or lower. Aliquot to avoid repeated freezing and thawing.

## Applications

- Western Blot (Tissue lysate)

LHX4 monoclonal antibody (M32), clone 4F6. Western Blot analysis of LHX4 expression in human pancreas.

[Protocol Download](#)

- Western Blot (Recombinant protein)

[Protocol Download](#)

- ELISA

## Gene Info — LHX4

Entrez GeneID	<a href="#">89884</a>
GeneBank Accession#	<a href="#">NM_033343</a>
Protein Accession#	<a href="#">NP_203129</a>
Gene Name	LHX4
Gene Alias	Gsh-4, Gsh4
Gene Description	LIM homeobox 4
Omim ID	<a href="#">602146 606606</a>
Gene Ontology	<a href="#">Hyperlink</a>

**Gene Summary**

This gene encodes a member of a large protein family which contains the LIM domain, a unique cysteine-rich zinc-binding domain. The encoded protein may function as a transcriptional regulator and be involved in control of differentiation and development of the pituitary gland. Mutations in this gene are associated with syndromic short stature and pituitary and hindbrain defects. An alternative splice variant has been described but its biological nature has not been determined. [provided by RefSeq]

**Other Designations**

LIM homeobox protein 4|OTTHUMP00000033083

**Disease**

- [Hypopituitarism](#)