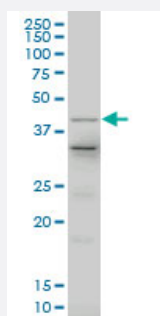


LHX4 monoclonal antibody (M15), clone 1D6

Catalog # H00089884-M15

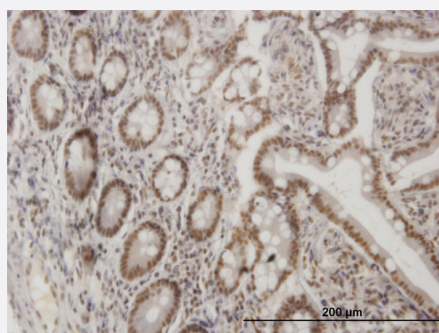
Size 100 ug

Applications



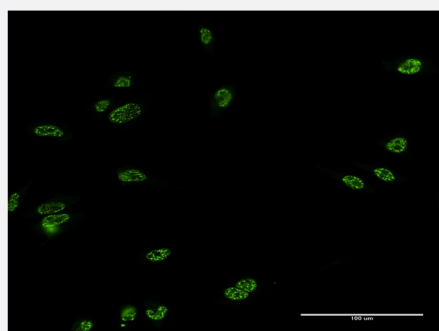
Western Blot (Tissue lysate)

LHX4 monoclonal antibody (M15), clone 1D6. Western Blot analysis of LHX4 expression in human spleen.



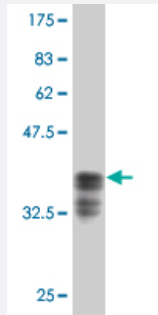
Immunohistochemistry (Formalin/PFA-fixed paraffin-embedded sections)

Immunoperoxidase of monoclonal antibody to LHX4 on formalin-fixed paraffin-embedded human small Intestine. [antibody concentration 3 ug/ml]



Immunofluorescence

Immunofluorescence of monoclonal antibody to LHX4 on HeLa cell . [antibody concentration 10 ug/ml]



Western Blot detection against Immunogen (37 KDa) .

Specification

Product Description	Mouse monoclonal antibody raised against a full-length recombinant LHX4.
Immunogen	LHX4 (NP_203129, 291 a.a. ~ 390 a.a) full-length recombinant protein with GST tag. MW of the GST tag alone is 26 KDa.
Sequence	SMDGTGQSYQDLRDGSPYGIQSPSSISLPSHAPLLNGLDYTVDSNLGIIAHAGQGVSQTLRAMA GGPTSDISTGSSVGYPDFPTSPGSWLDMDHPPF
Host	Mouse
Reactivity	Human
Interspecies Antigen Sequence	Mouse (98); Rat (95)
Isotype	IgG2a Kappa
Quality Control Testing	Antibody Reactive Against Recombinant Protein. Western Blot detection against Immunogen (37 KDa) .
Storage Buffer	In 1x PBS, pH 7.4
Storage Instruction	Store at -20°C or lower. Aliquot to avoid repeated freezing and thawing.

Applications

- Western Blot (Tissue lysate)

LHX4 monoclonal antibody (M15), clone 1D6. Western Blot analysis of LHX4 expression in human spleen.

[Protocol Download](#)

- Western Blot (Recombinant protein)

[Protocol Download](#)

- Immunohistochemistry (Formalin/PFA-fixed paraffin-embedded sections)

Immunoperoxidase of monoclonal antibody to LHX4 on formalin-fixed paraffin-embedded human small intestine. [antibody concentration 3 ug/ml]

[Protocol Download](#)

- ELISA

- Immunofluorescence

Immunofluorescence of monoclonal antibody to LHX4 on HeLa cell . [antibody concentration 10 ug/ml]

Gene Info — LHX4

Entrez GeneID [89884](#)

GeneBank Accession# [NM_033343](#)

Protein Accession# [NP_203129](#)

Gene Name LHX4

Gene Alias Gsh-4, Gsh4

Gene Description LIM homeobox 4

Omim ID [602146 606606](#)

Gene Ontology [Hyperlink](#)

Gene Summary This gene encodes a member of a large protein family which contains the LIM domain, a unique cysteine-rich zinc-binding domain. The encoded protein may function as a transcriptional regulator and be involved in control of differentiation and development of the pituitary gland. Mutations in this gene are associated with syndromic short stature and pituitary and hindbrain defects. An alternative splice variant has been described but its biological nature has not been determined. [provided by RefSeq]

Other Designations LIM homeobox protein 4|OTTHUMP00000033083

Disease

- [Hypopituitarism](#)