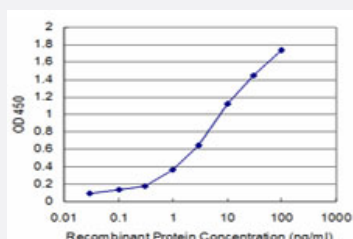


LHX4 monoclonal antibody (M07), clone 1H2

Catalog # H00089884-M07

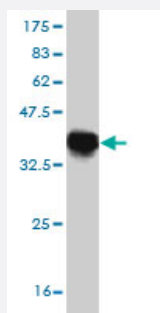
Size 100 ug

Applications



Sandwich ELISA (Recombinant protein)

Detection limit for recombinant GST tagged LHX4 is approximately 0.1ng/ml as a capture antibody.



Western Blot detection against Immunogen (36.63 KDa) .

Specification

Product Description

Mouse monoclonal antibody raised against a partial recombinant LHX4.

Immunogen

LHX4 (NP_203129, 208 a.a. ~ 306 a.a) partial recombinant protein with GST tag. MW of the GST tag alone is 26 KDa.

Sequence

RRAKEKRLKKDAGRHRWGQFYKSVKRSRGSSKQEKESSAEDCGVSDSELSFREDQILSELGHT
NRIYGNVGDVTGGQLMNGSFMSMDGTGQSYQDLRDGS

Host

Mouse

Reactivity

Human

Interspecies Antigen Sequence	Mouse (99); Rat (99)
Isotype	IgG2a Kappa
Quality Control Testing	Antibody Reactive Against Recombinant Protein. Western Blot detection against Immunogen (36.63 KDa) .
Storage Buffer	In 1x PBS, pH 7.4
Storage Instruction	Store at -20°C or lower. Aliquot to avoid repeated freezing and thawing.

Applications

- Western Blot (Recombinant protein)

[Protocol Download](#)

- Sandwich ELISA (Recombinant protein)

Detection limit for recombinant GST tagged LHX4 is approximately 0.1ng/ml as a capture antibody.

[Protocol Download](#)

- ELISA

Gene Info — LHX4

Entrez GeneID	89884
GeneBank Accession#	NM_033343
Protein Accession#	NP_203129
Gene Name	LHX4
Gene Alias	Gsh-4, Gsh4
Gene Description	LIM homeobox 4
Omim ID	602146 606606
Gene Ontology	Hyperlink

Gene Summary

This gene encodes a member of a large protein family which contains the LIM domain, a unique cysteine-rich zinc-binding domain. The encoded protein may function as a transcriptional regulator and be involved in control of differentiation and development of the pituitary gland. Mutations in this gene are associated with syndromic short stature and pituitary and hindbrain defects. An alternative splice variant has been described but its biological nature has not been determined. [provided by RefSeq]

Other Designations

LIM homeobox protein 4|OTTHUMP00000033083

Disease

- [Hypopituitarism](#)