

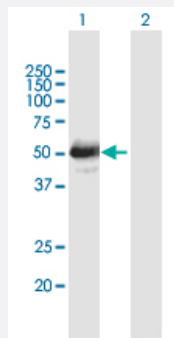
MaxPab®

LHX4 purified MaxPab mouse polyclonal antibody (B01P)

Catalog # H00089884-B01P

Size 50 ug

Applications

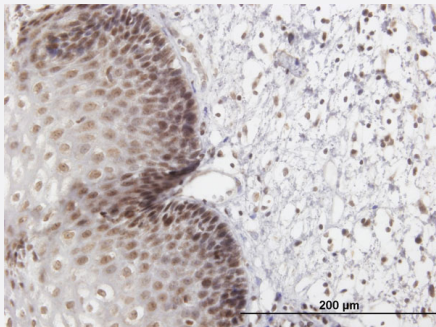


Western Blot (Transfected lysate)

Western Blot analysis of LHX4 expression in transfected 293T cell line ([H00089884-T01](#)) by LHX4 MaxPab polyclonal antibody.

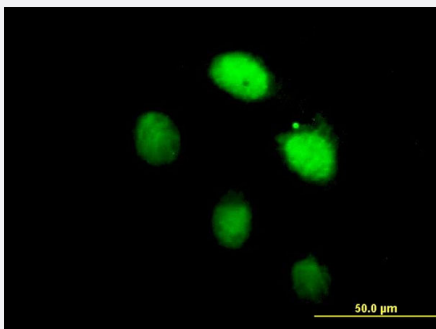
Lane 1: LHX4 transfected lysate(42.9 KDa).

Lane 2: Non-transfected lysate.



Immunohistochemistry (Formalin/PFA-fixed paraffin-embedded sections)

Immunoperoxidase of purified MaxPab antibody to LHX4 on formalin-fixed paraffin-embedded human esophagus. [antibody concentration 3 ug/ml]



Immunofluorescence

Immunofluorescence of purified MaxPab antibody to LHX4 on HeLa cell. [antibody concentration 10 ug/ml]

Specification

Product Description

Mouse polyclonal antibody raised against a full-length human LHX4 protein.

Immunogen	LHX4 (NP_203129.1, 1 a.a. ~ 390 a.a) full-length human protein.
Sequence	MMQSATVPAEGAVKGLPEMLGVPMQQIPQCAGCNQHILDKFILKVLDRHWHSSCLKCADCQMQ LADRCFSRAGSVYCKEDFFKRFGTKCTACQQGIPPTQVVRKAQDFVYHLHCFACIICNRQLATGD EFYLMEDGRLVCKEDYETAKQNDDSEAGAKRPRTTITAKQLETLKNA YKNSPKPARH VREQLSSE TGLDMRVVQVWFQNRRAKEKRLKKDAGRHRWGQFYKSVKRSRGSSKQEKESSAEDCGVSDS ELSFREDQILSELGHTNRIYGNVGDVTGGQLMNGSFSMDGTGQSYQDLRDGSPYGIPQSPSSISL PSHAPLLNGLDYTVDSNLGIIAHAGQGVSQTLRAMAGGPTSDISTGSSVGYPDFPTSPG SWLDEM DHPPF
Host	Mouse
Reactivity	Human
Interspecies Antigen Sequence	Mouse (99); Rat (98)
Quality Control Testing	Antibody reactive against mammalian transfected lysate.
Storage Buffer	In 1x PBS, pH 7.4
Storage Instruction	Store at -20°C or lower. Aliquot to avoid repeated freezing and thawing.

Applications

- Western Blot (Transfected lysate)

Western Blot analysis of LHX4 expression in transfected 293T cell line ([H00089884-T01](#)) by LHX4 MaxPab polyclonal antibody.

Lane 1: LHX4 transfected lysate(42.9 KDa).

Lane 2: Non-transfected lysate.

[Protocol Download](#)

- Immunohistochemistry (Formalin/PFA-fixed paraffin-embedded sections)

Immunoperoxidase of purified MaxPab antibody to LHX4 on formalin-fixed paraffin-embedded human esophagus. [antibody concentration 3 ug/ml]

[Protocol Download](#)

- Immunofluorescence

Immunofluorescence of purified MaxPab antibody to LHX4 on HeLa cell. [antibody concentration 10 ug/ml]

Gene Info — LHX4

Entrez GeneID

[89884](#)

GeneBank Accession#	NM_033343.2
Protein Accession#	NP_203129.1
Gene Name	LHX4
Gene Alias	Gsh-4, Gsh4
Gene Description	LIM homeobox 4
Omim ID	602146 606606
Gene Ontology	Hyperlink
Gene Summary	<p>This gene encodes a member of a large protein family which contains the LIM domain, a unique cysteine-rich zinc-binding domain. The encoded protein may function as a transcriptional regulator and be involved in control of differentiation and development of the pituitary gland. Mutations in this gene are associated with syndromic short stature and pituitary and hindbrain defects. An alternative splice variant has been described but its biological nature has not been determined. [provided by RefSeq]</p>
Other Designations	LIM homeobox protein 4 OTTHUMP00000033083

Disease

- [Hypopituitarism](#)