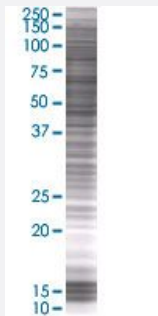


TPD52L3 293T Cell Transient Overexpression Lysate(Denatured)

Catalog # H00089882-T01

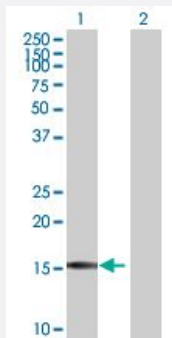
Size 100 uL

Applications



SDS-PAGE Gel

TPD52L3 transfected lysate.



Western Blot

Lane 1: TPD52L3 transfected lysate (15.51 KDa)

Lane 2: Non-transfected lysate.

Specification

Transfected Cell Line	293T
Plasmid	pCMV-TPD52L3 full-length
Host	Human
Theoretical MW (kDa)	15.51
Interspecies Antigen Sequence	Mouse (68); Rat (68)

Quality Control Testing

Transient overexpression cell lysate was tested with Anti-TPD52L3 antibody ([H00089882-B01](#)) by Western Blots.
SDS-PAGE Gel
TPD52L3 transfected lysate.
Western Blot
Lane 1: TPD52L3 transfected lysate (15.51 KDa)
Lane 2: Non-transfected lysate.

Storage Buffer

1X Sample Buffer (50 mM Tris-HCl, 2% SDS, 10% glycerol, 300 mM 2-mercaptoethanol, 0.01% Bromophenol blue)

Storage Instruction

Store at -80°C. Aliquot to avoid repeated freezing and thawing.

Applications

- Western Blot

Gene Info — TPD52L3

Entrez GeneID

[89882](#)

GeneBank Accession#

[NM_033516.4](#)

Protein Accession#

[NP_277051.3](#)

Gene Name

TPD52L3

Gene Alias

MGC26757, MGC45374, NYD-SP25, hD55

Gene Description

tumor protein D52-like 3

Gene Ontology

[Hyperlink](#)

Gene Summary

This gene encodes a member of the tumor protein D52-like family of proteins. These proteins are characterized by an N-terminal coiled-coil motif that is used to form homo- and heteromeric complexes with other tumor protein D52-like proteins. The encoded protein may play a role in spermatogenesis. Alternate splicing results in multiple transcript variants. [provided by RefSeq]

Other Designations

OTTHUMP00000021042|OTTHUMP00000021043|OTTHUMP00000021044|protein kinase NYD-SP25

Disease

- [Kidney Failure](#)