

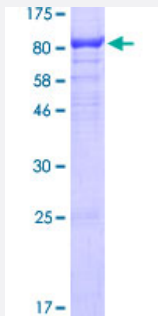
Full-Length

SIGLEC12 (Human) Recombinant Protein (P01)

Catalog # H00089858-P01

Size 25 ug, 10 ug

Applications



Specification

Product Description

Human SIGLEC12 full-length ORF (NP_443729.1, 1 a.a. - 595 a.a.) recombinant protein with GST-tag at N-terminal.

Sequence

MLLLLLLLPPLLCGRVGAKEQKDYLTMQKSVTVQEGLCVSVLCSFSYPQNGWTASDPVHGWWF
RAGDHVSRNIPVATNNPARAVQEEETRDRFHLLGDPQNKDCTLSIRDTRSDAGTYVFCVERGNM
KWNKYDQLSVNVTASQDLLSRYRLEVPESTVQEGLCVSVPCSVLYPHYNWTASSPVYGSWF
KEGADIPWDIPVATNTPSGKVQEDTHGRFLLLGDPTNNCSLSIRDARKGDSGKYYFQVERGSRK
WNYDYDKLSVHVTALHMTPTFSIPGTLESQHPRNLTCSPWACEQGTPTITWMGASVSSLDPTIT
RSSMLSLIPQPQDHGTSITCQVTLPGAGVTMTRAVRLNISYPQNLMTVFQGDGTASTTLRNGS
ALSVLEGQSLHLVCAVDSNPPARLSWTWGSITLSPSQSSNLGVLELPRVHVKDEGEFTCRAQN
PLGSQHISLSLSLQNEYTGKMRPISGVTLGAFGGAGATALVFLYFCIIFVVVRSCRKKSARPAVGVG
DTGMEDANAVRGSASQGPIESPADDSPPHHAPPALATPSPEEGEIQYASLSFHKARPQYPQEQ
EAIGYEYSEINIPK

Host

Wheat Germ (in vitro)

Theoretical MW (kDa)

91.4

Preparation Method

[in vitro wheat germ expression system](#)

Purification

Glutathione Sepharose 4 Fast Flow

Quality Control Testing

12.5% SDS-PAGE Stained with Coomassie Blue.

Storage Buffer	50 mM Tris-HCl, 10 mM reduced Glutathione, pH=8.0 in the elution buffer.
Storage Instruction	Store at -80°C. Aliquot to avoid repeated freezing and thawing.
Note	Best use within three months from the date of receipt of this protein.

Applications

- Enzyme-linked Immunoabsorbent Assay
- Western Blot (Recombinant protein)
- Antibody Production
- Protein Array

Gene Info — SIGLEC12

Entrez GeneID	89858
GeneBank Accession#	NM_053003.2
Protein Accession#	NP_443729.1
Gene Name	SIGLEC12
Gene Alias	FLJ38600, S2V, SIGLECL1, SLG, Siglec-12, Siglec-L1, Siglec-XII
Gene Description	sialic acid binding Ig-like lectin 12
Omim ID	606094
Gene Ontology	Hyperlink

Gene Summary

Sialic acid-binding immunoglobulin-like lectins (SIGLECs) are a family of cell surface proteins belonging to the immunoglobulin superfamily. They mediate protein-carbohydrate interactions by selectively binding to different sialic acid moieties present on glycolipids and glycoproteins. This gene encodes a member of the SIGLEC3-like subfamily of SIGLECs. Members of this subfamily are characterized by an extracellular V-set immunoglobulin-like domain followed by two C2-set immunoglobulin-like domains, and the cytoplasmic tyrosine-based motifs ITIM and SLAM-like. The encoded protein, upon tyrosine phosphorylation, has been shown to recruit the Src homology 2 domain-containing protein-tyrosine phosphatases SHP1 and SHP2. It has been suggested that the protein is involved in the negative regulation of macrophage signaling by functioning as an inhibitory receptor. This gene is located in a cluster with other SIGLEC3-like genes on 19q13.4. Alternatively spliced transcript variants encoding distinct isoforms have been described for this gene. [provided by RefSeq]

Other Designations

SIGLEC-like 1|sialic acid binding immunoglobulin-like lectin-like protein 1

Disease

- [Cardiovascular Diseases](#)
- [Diabetes Mellitus](#)
- [Edema](#)