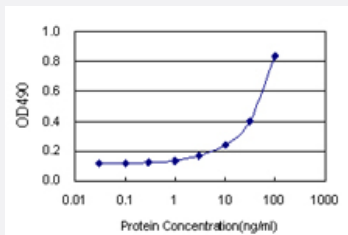


FGD3 (Human) Matched Antibody Pair

Catalog # H00089846-AP21

Size 1 Set

Applications



Sandwich ELISA detection sensitivity ranging from 1 ng/ml to 100 ng/ml.

Specification

Product Description	This antibody pair set comes with a matched antibody pair to detect and quantify the protein level of human FGD3.
Reactivity	Human
Interspecies Antigen Sequence	Mouse (73); Rat (68)
Quality Control Testing	Standard curve using recombinant protein (H00089846-P01) as an analyte. Sandwich ELISA detection sensitivity ranging from 1 ng/ml to 100 ng/ml.
Supplied Product	Antibody pair set content: 1. Capture antibody: rabbit MaxPab® affinity purified polyclonal anti-FGD3 (100 ug) 2. Detection antibody: mouse purified polyclonal anti-FGD3 (20 ug) *Reagents are sufficient for at least 1-2 x 96 well plates using recommended protocols.
Storage Instruction	Store reagents of the antibody pair set at -20°C or lower. Please aliquot to avoid repeated freeze thaw cycle. Reagents should be returned to -20°C storage immediately after use.

Applications

- ELISA Pair (Recombinant protein)

[Protocol Download](#)

Gene Info — FGD3

Entrez GeneID	89846
Gene Name	FGD3
Gene Alias	FLJ00004, MGC117260, ZFYVE5
Gene Description	FYVE, RhoGEF and PH domain containing 3
Gene Ontology	Hyperlink
Gene Summary	O
Other Designations	FGD1 family, member 3 OTTHUMP00000022784 OTTHUMP00000063693 faciogenital dysplasi a 3

Pathway

- [Regulation of actin cytoskeleton](#)