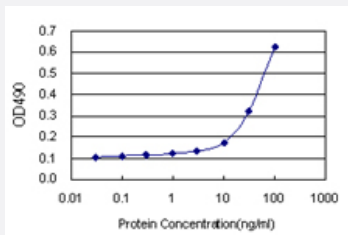


# FGD3 (Human) Matched Antibody Pair

Catalog # H00089846-AP11

Size 1 Set

## Applications



Sandwich ELISA detection sensitivity ranging from 3 ng/ml to 100 ng/ml.

## Specification

<b>Product Description</b>	This antibody pair set comes with a matched antibody pair to detect and quantify the protein level of human FGD3.
<b>Reactivity</b>	Human
<b>Interspecies Antigen Sequence</b>	Mouse (73); Rat (68)
<b>Quality Control Testing</b>	Standard curve using recombinant protein ( H00089846-P01 ) as an analyte. Sandwich ELISA detection sensitivity ranging from 3 ng/ml to 100 ng/ml.
<b>Supplied Product</b>	Antibody pair set content: 1. Capture antibody: rabbit MaxPab® affinity purified polyclonal anti-FGD3 (100 ug) 2. Detection antibody: mouse monoclonal anti-FGD3, IgG1 Kappa (20 ug) *Reagents are sufficient for at least 1-2 x 96 well plates using recommended protocols.
<b>Storage Instruction</b>	Store reagents of the antibody pair set at -20°C or lower. Please aliquot to avoid repeated freeze thaw cycle. Reagents should be returned to -20°C storage immediately after use.

## Applications

- ELISA Pair (Recombinant protein)

[Protocol Download](#)

## Gene Info — FGD3

Entrez GeneID	<a href="#">89846</a>
Gene Name	FGD3
Gene Alias	FLJ00004, MGC117260, ZFYVE5
Gene Description	FYVE, RhoGEF and PH domain containing 3
Gene Ontology	<a href="#">Hyperlink</a>
Gene Summary	O
Other Designations	FGD1 family, member 3 OTTHUMP00000022784 OTTHUMP00000063693 faciogenital dysplasi a 3

## Pathway

- [Regulation of actin cytoskeleton](#)