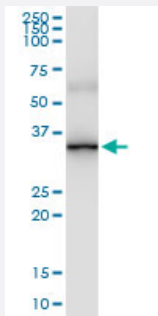


ABCC10 (Human) IP-WB Antibody Pair

Catalog # H00089845-PW1

Size 1 Set

Applications



Immunoprecipitation of ABCC10 transfected lysate using rabbit polyclonal anti-ABCC10 and Protein A Magnetic Bead ([U0007](#)), and immunoblotted with mouse purified polyclonal anti-ABCC10.

Specification

Product Description	This IP-WB antibody pair set comes with one antibody for immunoprecipitation and another to detect the precipitated protein in western blot.
Reactivity	Human
Quality Control Testing	Immunoprecipitation-Western Blot (IP-WB) Immunoprecipitation of ABCC10 transfected lysate using rabbit polyclonal anti-ABCC10 and Protein A Magnetic Bead (U0007), and immunoblotted with mouse purified polyclonal anti-ABCC10.
Supplied Product	Antibody pair set content: 1. Antibody pair for IP: rabbit polyclonal anti-ABCC10 (300 ul) 2. Antibody pair for WB: mouse purified polyclonal anti-ABCC10 (50 ug)
Storage Instruction	Store reagents of the antibody pair set at -20°C or lower. Please aliquot to avoid repeated freeze thaw cycle. Reagents should be returned to -20°C storage immediately after use.

Applications

- Immunoprecipitation-Western Blot

[Protocol Download](#)

Gene Info — ABCC10

Entrez GeneID	89845
Gene Name	ABCC10
Gene Alias	EST182763, MRP7, SIMRP7
Gene Description	ATP-binding cassette, sub-family C (CFTR/MRP), member 10
Gene Ontology	Hyperlink
Gene Summary	<p>The protein encoded by this gene is a member of the superfamily of ATP-binding cassette (ABC) transporters. ABC proteins transport various molecules across extra- and intra-cellular membranes. ABC genes are divided into seven distinct subfamilies (ABC1, MDR/TAP, MRP, ALD, OABP, GCN20, and White). This ABC full-transporter is a member of the MRP subfamily which is involved in multi-drug resistance. Alternative splicing of this gene results in multiple transcript variants; however, not all variants have been fully described. [provided by RefSeq]</p>
Other Designations	ATP-binding cassette, sub-family C, member 10 multidrug resistance-associated protein 7

Pathway

- [ABC transporters](#)