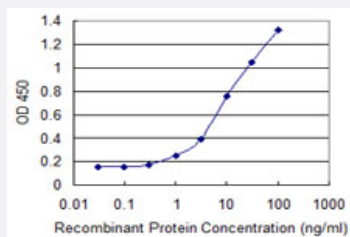


NAV2 monoclonal antibody (M01), clone 4D11

Catalog # H00089797-M01

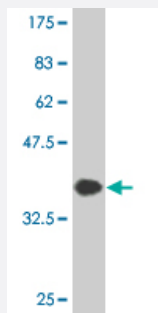
Size 100 ug

Applications



Sandwich ELISA (Recombinant protein)

Detection limit for recombinant GST tagged NAV2 is 0.3 ng/ml as a capture antibody.



Western Blot detection against Immunogen (36.3 KDa) .

Specification

Product Description

Mouse monoclonal antibody raised against a partial recombinant NAV2.

Immunogen

NAV2 (NP_892009.2, 1878 a.a. ~ 1973 a.a) partial recombinant protein with GST tag. MW of the GST tag alone is 26 KDa.

Sequence

TGSTPLLRNSHSNSLISECMDSEAETVMQLRNELRDKEMKLTDIRLEALSSAHQLDQLREAMNRM
QSEIEKLKAENDRLKSESQSGGCSRAPSQVS

Host

Mouse

Reactivity

Human

Interspecies Antigen Sequence	Mouse (99); Rat (99)
Isotype	IgG2a Kappa
Quality Control Testing	Antibody Reactive Against Recombinant Protein. Western Blot detection against Immunogen (36.3 KDa) .
Storage Buffer	In 1x PBS, pH 7.4
Storage Instruction	Store at -20°C or lower. Aliquot to avoid repeated freezing and thawing.

Applications

- Western Blot (Recombinant protein)

[Protocol Download](#)

- Sandwich ELISA (Recombinant protein)

Detection limit for recombinant GST tagged NAV2 is 0.3 ng/ml as a capture antibody.

[Protocol Download](#)

- ELISA

Gene Info — NAV2

Entrez GeneID	89797
GeneBank Accession#	NM_182964
Protein Accession#	NP_892009.2
Gene Name	NAV2
Gene Alias	FLJ10633, FLJ11030, FLJ23707, FLJ77876, HELAD1, KIAA1419, POMFIL2, RAINB1, STEERIN2, UNC53H2
Gene Description	neuron navigator 2
Omim ID	607026
Gene Ontology	Hyperlink

Gene Summary

The vitamin A metabolite, all-trans retinoic acid (atRA), plays an important role in neuronal development, including neurite outgrowth. RAINB1 is an atRA-responsive gene.[supplied by OMIM

Other Designations

helicase, APC down-regulated 1|pore membrane and/or filament interacting like protein 2|retinoic acid inducible gene in neuroblastoma 1

Disease

- [Tobacco Use Disorder](#)