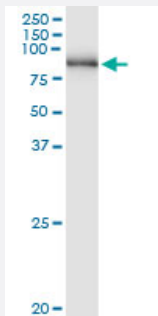


PNPT1 (Human) IP-WB Antibody Pair

Catalog # H00087178-PW1

Size 1 Set

Applications



Immunoprecipitation of PNPT1 transfected lysate using rabbit polyclonal anti-PNPT1 and Protein A Magnetic Bead ([U0007](#)), and immunoblotted with mouse purified polyclonal anti-PNPT1.

Specification

Product Description	This IP-WB antibody pair set comes with one antibody for immunoprecipitation and another to detect the precipitated protein in western blot.
Reactivity	Human
Interspecies Antigen Sequence	Mouse (90); Rat (91)
Quality Control Testing	Immunoprecipitation-Western Blot (IP-WB) Immunoprecipitation of PNPT1 transfected lysate using rabbit polyclonal anti-PNPT1 and Protein A Magnetic Bead (U0007), and immunoblotted with mouse purified polyclonal anti-PNPT1.
Supplied Product	Antibody pair set content: 1. Antibody pair for IP: rabbit polyclonal anti-PNPT1 (300 ul) 2. Antibody pair for WB: mouse purified polyclonal anti-PNPT1 (50 ug)
Storage Instruction	Store reagents of the antibody pair set at -20°C or lower. Please aliquot to avoid repeated freeze thaw cycle. Reagents should be returned to -20°C storage immediately after use.

Applications

- Immunoprecipitation-Western Blot

[Protocol Download](#)

Gene Info — PNPT1

Entrez GeneID	87178
Gene Name	PNPT1
Gene Alias	DKFZp762K1914, OLD35, PNPASE, old-35
Gene Description	polyribonucleotide nucleotidyltransferase 1
Omim ID	610316
Gene Ontology	Hyperlink
Gene Summary	PNPT1 is a subunit of the exosome complex, which is involved in 3-prime-to-5-prime exoribonuclease activity for RNA processing and degradation (Raijmakers et al., 2002 [PubMed 12419256]). [supplied by OMIM]
Other Designations	3'-5' RNA exonuclease polynucleotide phosphorylase polynucleotide phosphorylase-like

Pathway

- [Purine metabolism](#)
- [Pyrimidine metabolism](#)
- [RNA degradation](#)

Disease

- [Diabetes Mellitus](#)
- [Multiple Sclerosis](#)