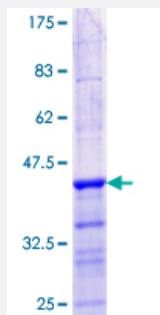


# MBD3L1 (Human) Recombinant Protein (Q01)

Catalog # H00085509-Q01

Size 25 ug, 10 ug

## Applications



## Specification

<b>Product Description</b>	Human MBD3L1 partial ORF ( NP_660209.1, 1 a.a. - 109 a.a.) recombinant protein with GST-tag at N-terminal.
<b>Sequence</b>	MAKSSQRKQRDCVNQCKSKPGLSTSIPLRMSSYTFKRPVTRITPHPGNEVRYHQWEESLEKPQQ VCWQRRLQGLQAYSSAGELSSTLDLANTLQKLVPSTGGSLLEDL
<b>Host</b>	Wheat Germ (in vitro)
<b>Theoretical MW (kDa)</b>	37.73
<b>Interspecies Antigen Sequence</b>	Mouse (74); Rat (70)
<b>Preparation Method</b>	<a href="#">in vitro wheat germ expression system</a>
<b>Purification</b>	Glutathione Sepharose 4 Fast Flow
<b>Quality Control Testing</b>	12.5% SDS-PAGE Stained with Coomassie Blue.
<b>Storage Buffer</b>	50 mM Tris-HCl, 10 mM reduced Glutathione, pH=8.0 in the elution buffer.
<b>Storage Instruction</b>	Store at -80°C. Aliquot to avoid repeated freezing and thawing.
<b>Note</b>	Best use within three months from the date of receipt of this protein.

## Applications

- Enzyme-linked Immunoabsorbent Assay
- Western Blot (Recombinant protein)
- Antibody Production
- Protein Array

## Gene Info — MBD3L1

Entrez GeneID	<a href="#">85509</a>
---------------	-----------------------

GeneBank Accession#	<a href="#">NM_145208</a>
---------------------	---------------------------

Protein Accession#	<a href="#">NP_660209.1</a>
--------------------	-----------------------------

Gene Name	MBD3L1
-----------	--------

Gene Alias	MBD3L, MGC138263, MGC138269
------------	-----------------------------

Gene Description	methyl-CpG binding domain protein 3-like 1
------------------	--

Omim ID	<a href="#">607963</a>
---------	------------------------

Gene Ontology	<a href="#">Hyperlink</a>
---------------	---------------------------

Gene Summary	This gene encodes a protein that is related to methyl-CpG-binding proteins but lacks the methyl-CpG binding domain. The protein is localized to discrete areas in the nucleus, and expression appears to be restricted to round spermatids, suggesting that the protein plays a role in the postmeiotic stages of male germ cell development. [provided by RefSeq]
--------------	--

Other Designations	methyl-CpG binding domain protein 3-like
--------------------	--