

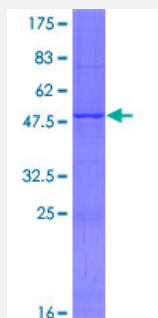
Full-Length

MBD3L1 (Human) Recombinant Protein (P01)

Catalog # H00085509-P01

Size 25 ug, 10 ug

Applications



Specification

Product Description	Human MBD3L1 full-length ORF (NP_660209.1, 1 a.a. - 194 a.a.) recombinant protein with GST-tag at N-terminal.
Sequence	MAKSSQRKQRDCVNQCKSKPGLSTSIPLRMSSYTFKRPVTRITPHPGNEVRYHQWEESLEKPQQ VCWQRRRLQGLQAYSSAGELSSTLDLANTLQKLVPSYTGGSLLDLASGLEHSCMPHLACSSDA VEIIPAEGVGISQLLCKQFLVTEEDIRKQEGKVKTVRERLAIALIADGLANEAEKVRDQEGCPEKR
Host	Wheat Germ (in vitro)
Theoretical MW (kDa)	48
Interspecies Antigen Sequence	Mouse (63); Rat (62)
Preparation Method	in vitro wheat germ expression system
Purification	Glutathione Sepharose 4 Fast Flow
Quality Control Testing	12.5% SDS-PAGE Stained with Coomassie Blue.
Storage Buffer	50 mM Tris-HCl, 10 mM reduced Glutathione, pH=8.0 in the elution buffer.
Storage Instruction	Store at -80°C. Aliquot to avoid repeated freezing and thawing.

Note

Best use within three months from the date of receipt of this protein.

Applications

- Enzyme-linked Immunoabsorbent Assay
- Western Blot (Recombinant protein)
- Antibody Production
- Protein Array

Gene Info — MBD3L1

Entrez GeneID [85509](#)

GeneBank Accession# [NM_145208.1](#)

Protein Accession# [NP_660209.1](#)

Gene Name MBD3L1

Gene Alias MBD3L, MGC138263, MGC138269

Gene Description methyl-CpG binding domain protein 3-like 1

Omim ID [607963](#)

Gene Ontology [Hyperlink](#)

Gene Summary This gene encodes a protein that is related to methyl-CpG-binding proteins but lacks the methyl-CpG binding domain. The protein is localized to discrete areas in the nucleus, and expression appears to be restricted to round spermatids, suggesting that the protein plays a role in the postmeiotic stages of male germ cell development. [provided by RefSeq]

Other Designations methyl-CpG binding domain protein 3-like