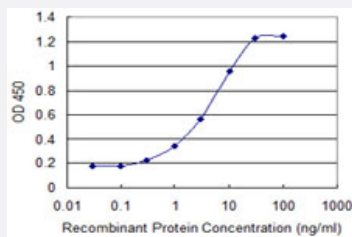


MBD3L1 monoclonal antibody (M08), clone 1C7

Catalog # H00085509-M08

Size 100 ug

Applications



Sandwich ELISA (Recombinant protein)

Detection limit for recombinant GST tagged MBD3L1 is 0.1 ng/ml as a capture antibody.

Specification

Product Description	Mouse monoclonal antibody raised against a partial recombinant MBD3L1.
Immunogen	MBD3L1 (NP_660209.1, 1 a.a. ~ 109 a.a) partial recombinant protein with GST tag. MW of the GST tag alone is 26 KDa.
Sequence	MAKSSQRKQRDCVNQCKSKPGLSTSIPLRMSSYTFKRPVTRITPHPGNEVRYHQWEESLEKPQQ VCWQRRLQGLQAYSSAGELSSTLDLANTLQKLVPSTGGSLLEDL
Host	Mouse
Reactivity	Human
Interspecies Antigen Sequence	Mouse (74); Rat (70)
Isotype	IgG1 Kappa
Quality Control Testing	Antibody Reactive Against Recombinant Protein.
Storage Buffer	In 1x PBS, pH 7.4
Storage Instruction	Store at -20°C or lower. Aliquot to avoid repeated freezing and thawing.

Applications

- Sandwich ELISA (Recombinant protein)

Detection limit for recombinant GST tagged MBD3L1 is 0.1 ng/ml as a capture antibody.

[Protocol Download](#)

- ELISA

Gene Info — MBD3L1

Entrez GeneID	85509
---------------	-----------------------

GeneBank Accession#	NM_145208
---------------------	---------------------------

Protein Accession#	NP_660209.1
--------------------	-----------------------------

Gene Name	MBD3L1
-----------	--------

Gene Alias	MBD3L, MGC138263, MGC138269
------------	-----------------------------

Gene Description	methyl-CpG binding domain protein 3-like 1
------------------	--

Omim ID	607963
---------	------------------------

Gene Ontology	Hyperlink
---------------	---------------------------

Gene Summary	This gene encodes a protein that is related to methyl-CpG-binding proteins but lacks the methyl-CpG binding domain. The protein is localized to discrete areas in the nucleus, and expression appears to be restricted to round spermatids, suggesting that the protein plays a role in the postmeiotic stages of male germ cell development. [provided by RefSeq]
--------------	--

Other Designations	methyl-CpG binding domain protein 3-like
--------------------	--