

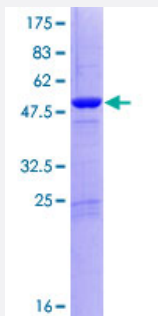
Full-Length

DGCR6L (Human) Recombinant Protein (P01)

Catalog # H00085359-P01

Size 25 ug, 10 ug

Applications



Specification

Product Description

Human DGCR6L full-length ORF (AAH00682.1, 1 a.a. - 220 a.a.) recombinant protein with GST-tag at N-terminal.

Sequence

MERYAAALEEVADGARQQERHYQLLSALQSLVKELPSSFQQRLSYTTLSDLALALLDGTVFEMQ
GLLEIQHLTEKSLYNQRLRLQNEHRVLRQALRQKHQEAQQACRPHNLPVVQAAQQRELEAVEHRI
REEQRAMDQKIILELDRKVADQQSTLEKAGVAGFYVTTNPQELMLQMNLLEIRKLQQRGCRAGN
AALGLGGPWQSPAAQCDQKGSPVPP

Host

Wheat Germ (in vitro)

Theoretical MW (kDa)

51.3

Preparation Method

[in vitro wheat germ expression system](#)

Purification

Glutathione Sepharose 4 Fast Flow

Quality Control Testing

12.5% SDS-PAGE Stained with Coomassie Blue.

Storage Buffer

50 mM Tris-HCl, 10 mM reduced Glutathione, pH=8.0 in the elution buffer.

Storage Instruction

Store at -80°C. Aliquot to avoid repeated freezing and thawing.

Note

Best use within three months from the date of receipt of this protein.

Applications

- Enzyme-linked Immunoabsorbent Assay
- Western Blot (Recombinant protein)
- Antibody Production
- Protein Array

Gene Info — DGCR6L

Entrez GeneID [85359](#)

GeneBank Accession# [BC000682.2](#)

Protein Accession# [AAH00682.1](#)

Gene Name DGCR6L

Gene Alias FLJ10666

Gene Description DiGeorge syndrome critical region gene 6-like

Omim ID [609459](#)

Gene Ontology [Hyperlink](#)

Gene Summary This gene, the result of a duplication at this locus, is one of two functional genes encoding nearly identical proteins that have similar expression patterns. The product of this gene is a protein that shares homology with the Drosophila gonadal protein, expressed in gonadal tissues and germ cells, and with the human laminin gamma-1 chain that functions in cell attachment and migration. This gene is located in a region of chromosome 22 implicated in the DiGeorge syndrome, one facet of a broader collection of anomalies referred to as the CATCH 22 syndrome. [provided by RefSeq]

Other Designations DiGeorge syndrome critical region gene 6 like