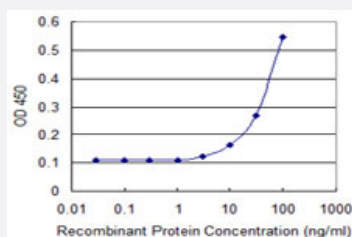


# PPP1R16A monoclonal antibody (M06), clone 2B12

Catalog # H00084988-M06

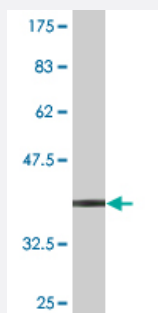
Size 100 ug

## Applications



### Sandwich ELISA (Recombinant protein)

Detection limit for recombinant GST tagged PPP1R16A is 3 ng/ml as a capture antibody.



Western Blot detection against Immunogen (36.74 KDa) .

## Specification

Product Description	Mouse monoclonal antibody raised against a partial recombinant PPP1R16A.
Immunogen	PPP1R16A (NP_116291.1, 429 a.a. ~ 528 a.a) partial recombinant protein with GST tag. MW of the GST tag alone is 26 KDa.
Sequence	DRSVSYQLSPLDSTTPHTLVHDKAHHTLADLKRRQAAAKLQRPPPEGPESPETAEPGLPGDVTVPQPDGCFRAGGDPPLLKLTAPAVEAPVERRPCCLLM
Host	Mouse
Reactivity	Human

Interspecies Antigen Sequence	Mouse (73); Rat (72)
Isotype	IgG2a Kappa
Quality Control Testing	Antibody Reactive Against Recombinant Protein. Western Blot detection against Immunogen (36.74 KDa) .
Storage Buffer	In 1x PBS, pH 7.4
Storage Instruction	Store at -20°C or lower. Aliquot to avoid repeated freezing and thawing.

## Applications

- Western Blot (Recombinant protein)

[Protocol Download](#)

- Sandwich ELISA (Recombinant protein)

Detection limit for recombinant GST tagged PPP1R16A is 3 ng/ml as a capture antibody.

[Protocol Download](#)

- ELISA

## Gene Info — PPP1R16A

Entrez GeneID	<a href="#">84988</a>
GeneBank Accession#	<a href="#">NM_032902</a>
Protein Accession#	<a href="#">NP_116291.1</a>
Gene Name	PPP1R16A
Gene Alias	MGC14333, MYPT3
Gene Description	protein phosphatase 1, regulatory (inhibitor) subunit 16A
Omim ID	<a href="#">609172</a>
Gene Ontology	<a href="#">Hyperlink</a>
Gene Summary	O

**Other Designations**

likley ortholog of mouse myosin phosphatase targeting subunit 3

---