

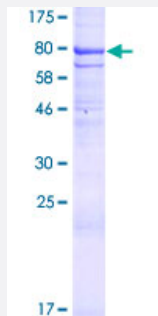
Full-Length

DISP1 (Human) Recombinant Protein (P01)

Catalog # H00084976-P01

Size 25 ug, 10 ug

Applications



Specification

Product Description

Human DISP1 full-length ORF (AAH07734.1, 1 a.a. - 542 a.a.) recombinant protein with GST-tag at N-terminal.

Sequence

MAMSNGNDFVVLSSNSSIATSAANPSPLTPCDGDHAAQQLTPKEATRTKVSPNGCLQLNGTVKS
SFLPLDNQRMPQMLPQCCHPCPYHHPLTSHSSHQECHPEAGPAAPSALASCCMQPHSEYSAS
LCPNHSPVYQTTCCCLQSPSPFCLHHWPDPHFQHQPVQQHIANIRPSRPFKLPKSYAALIADWPVV
VLGMCTMFVVCALVGVLPELPDFSDPLLGFEPRTAIGQRLVTWNNMVKNTGYKATLANYPFK
YADEQAKSHRDDRWSDDHYEREKREVDWNFHKDSFFCDVPSDRYSRVVFTSSGGETLWNLPAI
KSMCNVDNSRIRSHQPFGDLCQRTTAASCCPSWTLGNYAILNNRSCQKIVERDVSHTLKLLRTC
AKHYQNGTLGPDWCWMAARRKDQLKCTNVPKCTKYNAVYQILHYLVDKDFMTPKTADYATPAL
KYSMLFSPTEKGESMMNMYLDNFENWNSSDGVTTITGIEFGIKHSLFQDYLLMDTVYPAIAMVLLVM
CVYTKSMFITLMTMFAISSLVS

Host

Wheat Germ (in vitro)

Theoretical MW (kDa)

87.2

Preparation Method

[in vitro wheat germ expression system](#)

Purification

Glutathione Sepharose 4 Fast Flow

Quality Control Testing

12.5% SDS-PAGE Stained with Coomassie Blue.

Storage Buffer

50 mM Tris-HCl, 10 mM reduced Glutathione, pH=8.0 in the elution buffer.

Storage Instruction

Store at -80°C. Aliquot to avoid repeated freezing and thawing.

Note

Best use within three months from the date of receipt of this protein.

Applications

- Enzyme-linked Immunoabsorbent Assay
- Western Blot (Recombinant protein)
- Antibody Production
- Protein Array

Gene Info — DISP1

Entrez GeneID[84976](#)**GeneBank Accession#**[BC007734.2](#)**Protein Accession#**[AAH07734.1](#)**Gene Name**

DISP1

Gene Alias

DISPA, DKFZp434I0428, FLJ43740, MGC104180, MGC13130, MGC16796

Gene Description

dispatched homolog 1 (Drosophila)

Omim ID[607502](#)**Gene Ontology**[Hyperlink](#)**Gene Summary**

The pattern of cellular proliferation and differentiation that leads to normal development of embryonic structures often depends upon the localized production of secreted protein signals. Cells surrounding the source of a particular signal respond in a graded manner according to the effective concentration of the signal, and this response produces the pattern of cell types constituting the mature structure. A novel segment-polarity gene known as dispatched has been identified in Drosophila and its protein product is required for normal Hedgehog (Hh) signaling. This gene is one of two human homologs of Drosophila dispatched and, based on sequence identity to its mouse counterpart, the encoded protein may play an essential role in Hh patterning activities in the early embryo. [provided by RefSeq]

Other Designations

OTTHUMP00000036011|dispatched A

Disease

- [Tobacco Use Disorder](#)