

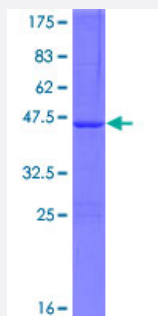
Full-Length

# ATG4D (Human) Recombinant Protein (P01)

Catalog # H00084971-P01

Size 25 ug, 10 ug

## Applications



## Specification

Product Description	Human ATG4D full-length ORF ( AAH07639.1, 1 a.a. - 141 a.a.) recombinant protein with GST-tag at N-terminal.
Sequence	MGGKPRHSLYFIGYQDDFLLYLDPHYCQPTVDVSQADFPLESFHCTSPRKMAFAKMDPSC TVGF YAGDRKEFETLCSELTRVLSSSSATERYPMFTLAEGHAQDHSDDLCSQLAQPTLRLPRTGRLLR AKRPSSSEDFVFL
Host	Wheat Germ (in vitro)
Theoretical MW (kDa)	42.4
Interspecies Antigen Sequence	Mouse (91); Rat (91)
Preparation Method	<a href="#">in vitro wheat germ expression system</a>
Purification	Glutathione Sepharose 4 Fast Flow
Quality Control Testing	12.5% SDS-PAGE Stained with Coomassie Blue.
Storage Buffer	50 mM Tris-HCl, 10 mM reduced Glutathione, pH=8.0 in the elution buffer.
Storage Instruction	Store at -80°C. Aliquot to avoid repeated freezing and thawing.

**Note**

Best use within three months from the date of receipt of this protein.

## Applications

- Enzyme-linked Immunoabsorbent Assay
- Western Blot (Recombinant protein)
- Antibody Production
- Protein Array

## Gene Info — ATG4D

**Entrez GeneID** [84971](#)**GeneBank Accession#** [BC007639.1](#)**Protein Accession#** [AAH07639.1](#)**Gene Name** ATG4D**Gene Alias** APG4-D, APG4D, AUTL4**Gene Description** ATG4 autophagy related 4 homolog D (S. cerevisiae)**Omim ID** [611340](#)**Gene Ontology** [Hyperlink](#)

**Gene Summary** Autophagy is the process by which endogenous proteins and damaged organelles are destroyed intracellularly. Autophagy is postulated to be essential for cell homeostasis and cell remodeling during differentiation, metamorphosis, non-apoptotic cell death, and aging. Reduced levels of autophagy have been described in some malignant tumors, and a role for autophagy in controlling the unregulated cell growth linked to cancer has been proposed. This gene encodes a member of the autophagin protein family. The encoded protein is also designated as a member of the C-54 family of cysteine proteases. [provided by RefSeq]

**Other Designations** APG4 autophagy 4 homolog D|AUT-like 4, cysteine endopeptidase|autophagin-4|autophagy-related cysteine endopeptidase 4|cysteine protease involved in autophagy

## Pathway

- [Regulation of autophagy](#)