

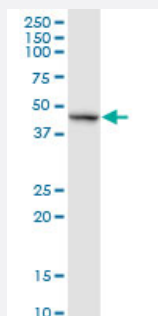
MaxPab®

REL T purified MaxPab rabbit polyclonal antibody (D01P)

Catalog # H00084957-D01P

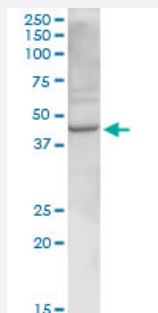
Size 100 ug

Applications



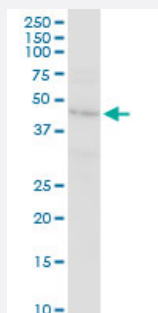
Western Blot (Tissue lysate)

REL T MaxPab rabbit polyclonal antibody. Western Blot analysis of REL T expression in human pancreas.



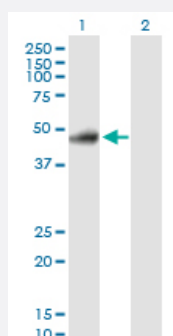
Western Blot (Tissue lysate)

REL T MaxPab rabbit polyclonal antibody. Western Blot analysis of REL T expression in mouse kidney.



Western Blot (Cell lysate)

REL T MaxPab rabbit polyclonal antibody. Western Blot analysis of REL T expression in HeLa.

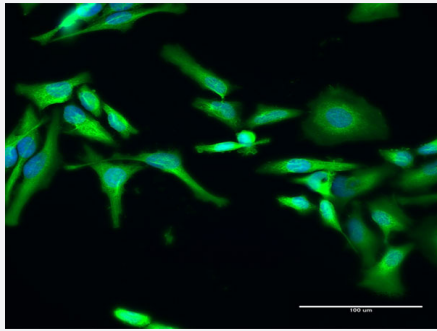


Western Blot (Transfected lysate)

Western Blot analysis of REL T expression in transfected 293T cell line ([H00084957-T02](#)) by REL T MaxPab polyclonal antibody.

Lane 1: REL T transfected lysate(46.10 KDa).

Lane 2: Non-transfected lysate.



Immunofluorescence

Immunofluorescence of purified MaxPab antibody to RELT on HeLa cell.
[antibody concentration 20 ug/ml]

Specification

| | |
|--------------------------------|---|
| Product Description | Rabbit polyclonal antibody raised against a full-length human RELT protein. |
| Immunogen | RELT (NP_116260.2, 1 a.a. ~ 430 a.a) full-length human protein. |
| Sequence | MKPSLLCRPLSCFLMLLPWPLATLTSTTLWQCPPGEEPDLDPGQGTLCRPCPPGTFSAAWGSS PCQPHARCSLWRRLEAQVGMATRDTLGDCWPGWFGPWGVPRVPCQPCSWAPLGTHGCDE WGRRARRGVEVAAGASSGGETRQPGNGTRAGGPEETAQYAVIAMPVFCLMGLLGILVCNLLKR KGYHCTAHKEVGP GPGGGGSGINPAYRTEDANEDTIGVLVRLITEKKENAAAEEELLKEYHSKQLV QTSHRPVSKLPPAPPNVPHICPHRHLHTVQGLASLSGPCCSRCSQKKWPEVLLSPEAVAATTP VPSLLPNPTRVPKAGAKAGRQGEITLSVGRFRVARIPEQRTSSMVSEVKTITEAGPSWGDLPDSP QPGLPPEQQALLGSGGSRTKWLPKPAENKAEENRYVRLSESNLVI |
| Host | Rabbit |
| Reactivity | Human, Mouse |
| Quality Control Testing | Antibody reactive against mammalian transfected lysate. |
| Storage Buffer | In 1x PBS, pH 7.4 |
| Storage Instruction | Store at -20°C or lower. Aliquot to avoid repeated freezing and thawing. |

Applications

- Western Blot (Tissue lysate)

RELT MaxPab rabbit polyclonal antibody. Western Blot analysis of RELT expression in human pancreas.

[Protocol Download](#)

- Western Blot (Tissue lysate)

RELT MaxPab rabbit polyclonal antibody. Western Blot analysis of RELT expression in mouse kidney.

[Protocol Download](#)

- Western Blot (Cell lysate)

RELT MaxPab rabbit polyclonal antibody. Western Blot analysis of RELT expression in HeLa.

[Protocol Download](#)

- Western Blot (Transfected lysate)

Western Blot analysis of RELT expression in transfected 293T cell line ([H00084957-T02](#)) by RELT MaxPab polyclonal antibody.

Lane 1: RELT transfected lysate(46.10 KDa).

Lane 2: Non-transfected lysate.

[Protocol Download](#)

- Immunofluorescence

Immunofluorescence of purified MaxPab antibody to RELT on HeLa cell. [antibody concentration 20 ug/ml]

Gene Info — RELT

Entrez GeneID [84957](#)

GeneBank Accession# [NM_032871.3](#)

Protein Accession# [NP_116260.2](#)

Gene Name RELT

Gene Alias FLJ14993, TNFRSF19L

Gene Description RELT tumor necrosis factor receptor

Omim ID [611211](#)

Gene Ontology [Hyperlink](#)

Gene Summary The protein encoded by this gene is a member of the TNF-receptor superfamily. This receptor is especially abundant in hematologic tissues. It has been shown to activate the NF-kappaB pathway and selectively bind TNF receptor-associated factor 1 (TRAF1). This receptor is capable of stimulating T-cell proliferation in the presence of CD3 signaling, which suggests its regulatory role in immune response. Two alternatively spliced transcript variants of this gene encoding the same protein have been reported. [provided by RefSeq]

Other Designations

receptor expressed in lymphoid tissues|tumor necrosis factor receptor superfamily, member 19-like

Pathway

- [Cytokine-cytokine receptor interaction](#)