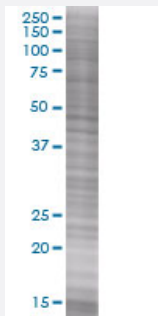


HSH2D 293T Cell Transient Overexpression Lysate(Denatured)

Catalog # H00084941-T01

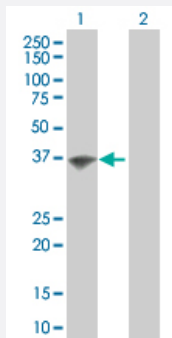
Size 100 uL

Applications



SDS-PAGE Gel

HSH2D transfected lysate



Western Blot

Lane 1: HSH2D transfected lysate (39 KDa).

Lane 2: Non-transfected lysate.

Specification

Transfected Cell Line	293T
Plasmid	pCMV-HSH2D full-length
Host	Human
Theoretical MW (kDa)	39
Interspecies Antigen Sequence	Mouse (52); Rat (51)

Quality Control Testing

Transient overexpression cell lysate was tested with Anti-HSH2D antibody ([H00084941-B02](#)) by Western Blots.
SDS-PAGE Gel
HSH2D transfected lysate
Western Blot
Lane 1: HSH2D transfected lysate (39 KDa).
Lane 2: Non-transfected lysate.

Storage Buffer

1X Sample Buffer (50 mM Tris-HCl, 2% SDS, 10% glycerol, 300 mM 2-mercaptoethanol, 0.01% Bromophenol blue)

Storage Instruction

Store at -80°C. Aliquot to avoid repeated freezing and thawing.

Applications

- Western Blot

Gene Info — HSH2D

Entrez GeneID[84941](#)**GeneBank Accession#**[NM_032855](#)**Protein Accession#**[NP_116244](#)**Gene Name**

HSH2D

Gene Alias

ALX, FLJ14886, HSH2

Gene Description

hematopoietic SH2 domain containing

Omim ID[608349](#)**Gene Ontology**[Hyperlink](#)**Gene Summary**

T-cell activation requires 2 signals: recognition of antigen by the T-cell receptor (see TCR; MIM 186880) and a costimulatory signal provided primarily by CD28 (MIM 186760) in naive T cells. HSH2 is a target of both of these signaling pathways (Greene et al., 2003 [PubMed 12960172]).[supplied by OMIM]

Other Designations

adaptor in lymphocytes of unknown function X|hematopoietic SH2 protein

Disease

- [Cardiovascular Diseases](#)
- [Diabetes Mellitus](#)
- [Edema](#)