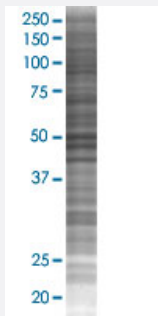


# ATG4C 293T Cell Transient Overexpression Lysate(Denatured)

Catalog # H00084938-T02

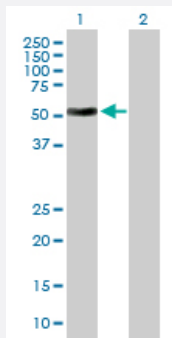
Size 100 uL

## Applications



### SDS-PAGE Gel

ATG4C transfected lysate.



### Western Blot

Lane 1: ATG4C transfected lysate ( 52.50 KDa)

Lane 2: Non-transfected lysate.

## Specification

|                               |                        |
|-------------------------------|------------------------|
| Transfected Cell Line         | 293T                   |
| Plasmid                       | pCMV-ATG4C full-length |
| Host                          | Human                  |
| Theoretical MW (kDa)          | 52.5                   |
| Interspecies Antigen Sequence | Mouse (90); Rat (90)   |

**Quality Control Testing**

Transient overexpression cell lysate was tested with Anti-ATG4C antibody ([H00084938-B01P](#)) by Western Blots.  
SDS-PAGE Gel  
ATG4C transfected lysate.  
Western Blot  
Lane 1: ATG4C transfected lysate ( 52.50 KDa)  
Lane 2: Non-transfected lysate.

**Storage Buffer**

1X Sample Buffer (50 mM Tris-HCl, 2% SDS, 10% glycerol, 300 mM 2-mercaptoethanol, 0.01% Bromophenol blue)

**Storage Instruction**

Store at -80°C. Aliquot to avoid repeated freezing and thawing.

## Applications

- Western Blot

## Gene Info — ATG4C

**Entrez GeneID**[84938](#)**GeneBank Accession#**[NM\\_032852](#)**Protein Accession#**[NP\\_116241.2](#)**Gene Name**

ATG4C

**Gene Alias**

APG4-C, APG4C, AUTL1, AUTL3, FLJ14867

**Gene Description**

ATG4 autophagy related 4 homolog C (S. cerevisiae)

**Omim ID**[611339](#)**Gene Ontology**[Hyperlink](#)**Gene Summary**

Autophagy is the process by which endogenous proteins and damaged organelles are destroyed intracellularly. Autophagy is postulated to be essential for cell homeostasis and cell remodeling during differentiation, metamorphosis, non-apoptotic cell death, and aging. Reduced levels of autophagy have been described in some malignant tumors, and a role for autophagy in controlling the unregulated cell growth linked to cancer has been proposed. This gene encodes a member of the autophagin protein family. The encoded protein is also designated as a member of the C-54 family of cysteine proteases. Alternate transcriptional splice variants, encoding the same protein, have been characterized. [provided by RefSeq]

**Other Designations**

APG4 autophagy 4 homolog C|AUT-like 1, cysteine endopeptidase|AUT-like 3 cysteine endopeptidase|OTTHUMP00000010715|autophagin-3|autophagy-related cysteine endopeptidase 3

## Pathway

- [Regulation of autophagy](#)