

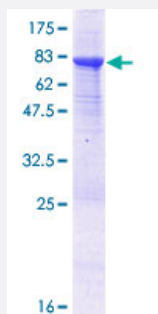
Full-Length

ATG4C (Human) Recombinant Protein (P01)

Catalog # H00084938-P01

Size 25 ug, 10 ug

Applications



Specification

Product Description

Human ATG4C full-length ORF (NP_116241.2, 1 a.a. - 458 a.a.) recombinant protein with GST-tag at N-terminal.

Sequence

MEATGTDEVDKLKTKFISAWNNMKYSWVLKTKTYFSRNSPVLLLGKCYHFKYEDEDKTLPAESG
CTIEDHVIAGNVVEEFRKDFISRMLTYREEFPQIEGSALTTDCGWGCTLRGTQMLLAQGLILHFLGRA
WTWPDALNIENSSESWSHTVKKFTASFEASLSGEREFKPTISLKETIGKYSDDHEMRNEVYH
RKIISWFGDSPLALFGLHQLIEYGKKSGKKAGDWYGPVVAHILRKAVEEARHPDLQGITYVAQDC
TVYNSDVIDKQSASMTSDNADDKAVIILVPVRLGGERTNTDYLEFVKGILSLEYCVGIIGGKPKQSY
FAGFQDDSLYMDPHYCQSFVDVSIKDFPLETFHCPSPKKMSFRKMDPSCTIGFYCRNVQDFKRA
SEEITKMLKFSSKEKYPLFTFVNGHSRDYDFTSTTTNEEDLFSEDEKKQLKRFSTEEFVLL

Host

Wheat Germ (in vitro)

Theoretical MW (kDa)

78.9

Interspecies Antigen Sequence

Mouse (90); Rat (90)

Preparation Method

[in vitro wheat germ expression system](#)

Purification

Glutathione Sepharose 4 Fast Flow

Quality Control Testing

12.5% SDS-PAGE Stained with Coomassie Blue.

Storage Buffer	50 mM Tris-HCl, 10 mM reduced Glutathione, pH=8.0 in the elution buffer.
Storage Instruction	Store at -80°C. Aliquot to avoid repeated freezing and thawing.
Note	Best use within three months from the date of receipt of this protein.

Applications

- Enzyme-linked Immunoabsorbent Assay
- Western Blot (Recombinant protein)
- Antibody Production
- Protein Array

Gene Info — ATG4C

Entrez GeneID	84938
---------------	-----------------------

GeneBank Accession#	NM_032852.2
---------------------	-----------------------------

Protein Accession#	NP_116241.2
--------------------	-----------------------------

Gene Name	ATG4C
-----------	-------

Gene Alias	APG4-C, APG4C, AUTL1, AUTL3, FLJ14867
------------	---------------------------------------

Gene Description	ATG4 autophagy related 4 homolog C (S. cerevisiae)
------------------	--

Omim ID	611339
---------	------------------------

Gene Ontology	Hyperlink
---------------	---------------------------

Gene Summary	Autophagy is the process by which endogenous proteins and damaged organelles are destroyed intracellularly. Autophagy is postulated to be essential for cell homeostasis and cell remodeling during differentiation, metamorphosis, non-apoptotic cell death, and aging. Reduced levels of autophagy have been described in some malignant tumors, and a role for autophagy in controlling the unregulated cell growth linked to cancer has been proposed. This gene encodes a member of the autophagin protein family. The encoded protein is also designated as a member of the C-54 family of cysteine proteases. Alternate transcriptional splice variants, encoding the same protein, have been characterized. [provided by RefSeq]
--------------	--

Other Designations	APG4 autophagy 4 homolog C AUT-like 1, cysteine endopeptidase AUT-like 3 cysteine endopeptidase OTTHUMP00000010715 autophagin-3 autophagy-related cysteine endopeptidase 3
--------------------	--

Pathway

- [Regulation of autophagy](#)