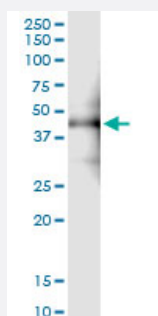


ZFYVE19 (Human) IP-WB Antibody Pair

Catalog # H00084936-PW1

Size 1 Set

Applications



Immunoprecipitation of ZFYVE19 transfected lysate using rabbit polyclonal anti-ZFYVE19 and Protein A Magnetic Bead ([U0007](#)), and immunoblotted with mouse polyclonal anti-ZFYVE19.

Specification

Product Description	This IP-WB antibody pair set comes with one antibody for immunoprecipitation and another to detect the precipitated protein in western blot.
Reactivity	Human
Interspecies Antigen Sequence	Mouse (79); Rat (76)
Quality Control Testing	Immunoprecipitation-Western Blot (IP-WB) Immunoprecipitation of ZFYVE19 transfected lysate using rabbit polyclonal anti-ZFYVE19 and Protein A Magnetic Bead (U0007), and immunoblotted with mouse polyclonal anti-ZFYVE19.
Supplied Product	Antibody pair set content: 1. Antibody pair for IP: rabbit polyclonal anti-ZFYVE19 (300 ul) 2. Antibody pair for WB: mouse polyclonal anti-ZFYVE19 (50 ul)
Storage Instruction	Store reagents of the antibody pair set at -20°C or lower. Please aliquot to avoid repeated freeze thaw cycle. Reagents should be returned to -20°C storage immediately after use.

Applications

- Immunoprecipitation-Western Blot

[Protocol Download](#)

Gene Info — ZFYVE19

Entrez GeneID	84936
Gene Name	ZFYVE19
Gene Alias	FLJ14840, MPFYVE
Gene Description	zinc finger, FYVE domain containing 19
Gene Ontology	Hyperlink
Gene Summary	O
Other Designations	-