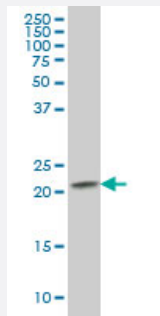


RAB2B monoclonal antibody (M02), clone 7E4

Catalog # H00084932-M02

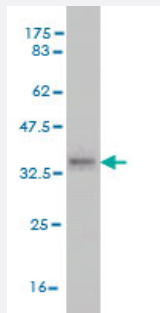
Size 100 ug

Applications



Western Blot (Cell lysate)

RAB2B monoclonal antibody (M02), clone 7E4. Western Blot analysis of RAB2B expression in Raw 264.7.



Western Blot detection against Immunogen (35.64 KDa) .

Specification

Product Description	Mouse monoclonal antibody raised against a partial recombinant RAB2B.
Immunogen	RAB2B (NP_116235, 127 a.a. ~ 216 a.a) partial recombinant protein with GST tag. MW of the GST tag alone is 26 KDa.
Sequence	RDVKREEGEAFAREHGLIFMETS AKTACNVEEAFINTAKEIYRKIQQGLFDVHNEANGIKIGPQQSIS TSVGPSASQRNSRDIGSNSGCC
Host	Mouse
Reactivity	Human, Mouse

Interspecies Antigen Sequence	Mouse (88); Rat (89)
Isotype	IgG1 Kappa
Quality Control Testing	Antibody Reactive Against Recombinant Protein. Western Blot detection against Immunogen (35.64 KDa) .
Storage Buffer	In 1x PBS, pH 7.4
Storage Instruction	Store at -20°C or lower. Aliquot to avoid repeated freezing and thawing.

Applications

- Western Blot (Cell lysate)

RAB2B monoclonal antibody (M02), clone 7E4. Western Blot analysis of RAB2B expression in Raw 264.7.

[Protocol Download](#)

- Western Blot (Recombinant protein)

[Protocol Download](#)

- ELISA

Gene Info — RAB2B

Entrez GeneID	84932
GeneBank Accession#	NM_032846
Protein Accession#	NP_116235
Gene Name	RAB2B
Gene Alias	FLJ14824
Gene Description	RAB2B, member RAS oncogene family
Omim ID	607466
Gene Ontology	Hyperlink

Gene Summary

Members of the Rab protein family are nontransforming monomeric GTP-binding proteins of the Ras superfamily that contain 4 highly conserved regions involved in GTP binding and hydrolysis. Rab proteins are prenylated, membrane-bound proteins involved in vesicular fusion and trafficking; see MIM 179508.[supplied by OMIM]

Other Designations

GTP-binding protein RAB2B|OTTHUMP00000195135|RAB2B protein|RAS family, member RAB2B