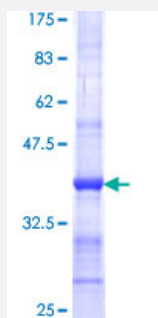


# SPPL2A (Human) Recombinant Protein (Q01)

Catalog # H00084888-Q01

Size 25 ug, 10 ug

## Applications



## Specification

<b>Product Description</b>	Human SPPL2A partial ORF ( NP_116191, 31 a.a. - 129 a.a.) recombinant protein with GST-tag at N-terminal.
<b>Sequence</b>	HASGNGTTKDYCMLYNPYWTALPSTLENATSISLMNLTSTPLCNLSDIPPVGKSKAVVVPWGSCH FLEKARIAQKGGAEAMLVNNSVLFPPSGNRSE
<b>Host</b>	Wheat Germ (in vitro)
<b>Theoretical MW (kDa)</b>	36.63
<b>Interspecies Antigen Sequence</b>	Mouse (71); Rat (72)
<b>Preparation Method</b>	<a href="#">in vitro wheat germ expression system</a>
<b>Purification</b>	Glutathione Sepharose 4 Fast Flow
<b>Quality Control Testing</b>	12.5% SDS-PAGE Stained with Coomassie Blue.
<b>Storage Buffer</b>	50 mM Tris-HCl, 10 mM reduced Glutathione, pH=8.0 in the elution buffer.
<b>Storage Instruction</b>	Store at -80°C. Aliquot to avoid repeated freezing and thawing.
<b>Note</b>	Best use within three months from the date of receipt of this protein.

## Applications

- Enzyme-linked Immunoabsorbent Assay
- Western Blot (Recombinant protein)
- Antibody Production
- Protein Array

## Gene Info — SPPL2A

Entrez GeneID [84888](#)

GeneBank Accession# [NM\\_032802](#)

Protein Accession# [NP\\_116191](#)

Gene Name SPPL2A

Gene Alias IMP3, PSL2

Gene Description signal peptide peptidase-like 2A

Omim ID [608238](#)

Gene Ontology [Hyperlink](#)

**Gene Summary** This gene is a member of the signal peptide peptidase-like protease (SPPL) family and encodes an endosomal membrane protein with a protease associated (PA) domain. This protein plays a role in innate and adaptive immunity. A pseudogene of this gene also lies on chromosome 15. [provided by RefSeq]

**Other Designations** intramembrane cleaving protease|intramembrane protease 3|presenilin-like protein 2