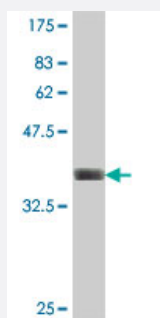


SPPL2A polyclonal antibody (A01)

Catalog # H00084888-A01

Size 50 uL

Applications



Western Blot detection against Immunogen (37 KDa) .

Specification

Product Description	Mouse polyclonal antibody raised against a partial recombinant SPPL2A.
Immunogen	SPPL2A (NP_116191, 31 a.a. ~ 129 a.a) partial recombinant protein with GST tag.
Sequence	HASGNGTTKDYCMLYNPYWTALPSTLENATSISLMNLTSTPLCNLSDIPPVGIKSKAVVVPWGSCH FLEKARIAQKGGAEAMLVVNNSVLFPSPGNRSE
Host	Mouse
Reactivity	Human
Interspecies Antigen Sequence	Mouse (71); Rat (72)
Quality Control Testing	Antibody Reactive Against Recombinant Protein. Western Blot detection against Immunogen (37 KDa) .
Storage Buffer	50 % glycerol
Storage Instruction	Store at -20°C or lower. Aliquot to avoid repeated freezing and thawing.

Applications

- Western Blot (Recombinant protein)

[Protocol Download](#)

- ELISA

Gene Info — SPPL2A

Entrez GeneID [84888](#)

GeneBank Accession# [NM_032802](#)

Protein Accession# [NP_116191](#)

Gene Name SPPL2A

Gene Alias IMP3, PSL2

Gene Description signal peptide peptidase-like 2A

Omim ID [608238](#)

Gene Ontology [Hyperlink](#)

Gene Summary This gene is a member of the signal peptide peptidase-like protease (SPPL) family and encodes an endosomal membrane protein with a protease associated (PA) domain. This protein plays a role in innate and adaptive immunity. A pseudogene of this gene also lies on chromosome 15. [provided by RefSeq]

Other Designations intramembrane cleaving protease|intramembrane protease 3|presenilin-like protein 2