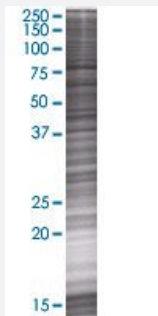


LRCH3 293T Cell Transient Overexpression Lysate(Denatured)

Catalog # H00084859-T01

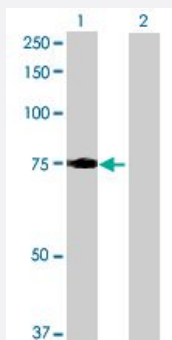
Size 100 uL

Applications



SDS-PAGE Gel

LRCH3 transfected lysate.



Western Blot

Lane 1: LRCH3 transfected lysate (78.8 KDa)

Lane 2: Non-transfected lysate.

Specification

Transfected Cell Line	293T
Plasmid	pCMV-LRCH3 full-length
Host	Human
Theoretical MW (kDa)	78.8
Interspecies Antigen Sequence	Mouse (87)

Quality Control Testing

Transient overexpression cell lysate was tested with Anti-LRCH3 antibody ([H00084859-B01](#)) by Western Blots.
SDS-PAGE Gel
LRCH3 transfected lysate.
Western Blot
Lane 1: LRCH3 transfected lysate (78.8 KDa)
Lane 2: Non-transfected lysate.

Storage Buffer

1X Sample Buffer (50 mM Tris-HCl, 2% SDS, 10% glycerol, 300 mM 2-mercaptoethanol, 0.01% Bromophenol blue)

Storage Instruction

Store at -80°C. Aliquot to avoid repeated freezing and thawing.

Applications

- Western Blot

Gene Info — LRCH3

Entrez GeneID

[84859](#)

GeneBank Accession#

[NM_032773](#)

Protein Accession#

[NP_116162](#)

Gene Name

LRCH3

Gene Alias

FLJ20994, FLJ43245, FLJ44976, MGC4126

Gene Description

leucine-rich repeats and calponin homology (CH) domain containing 3

Gene Ontology

[Hyperlink](#)

Other Designations

2210409B11Rik