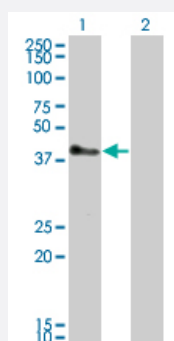


# TRIM52 monoclonal antibody (M01), clone 6D5

Catalog # H00084851-M01

Size 100 ug

## Applications

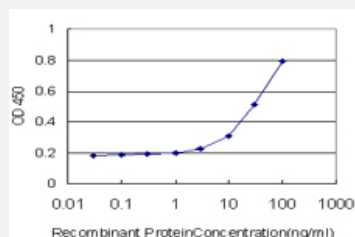


### Western Blot (Transfected lysate)

Western Blot analysis of TRIM52 expression in transfected 293T cell line by TRIM52 monoclonal antibody (M01), clone 6D5.

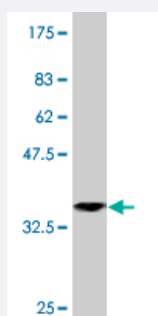
Lane 1: TRIM52 transfected lysate (34.653 KDa).

Lane 2: Non-transfected lysate.



### Sandwich ELISA (Recombinant protein)

Detection limit for recombinant GST tagged TRIM52 is approximately 1 ng/ml as a capture antibody.



Western Blot detection against Immunogen (36.41 KDa) .

## Specification

### Product Description

Mouse monoclonal antibody raised against a partial recombinant TRIM52.

Immunogen	TRIM52 (NP_116154, 201 a.a. ~ 297 a.a) partial recombinant protein with GST tag. MW of the GST tag alone is 26 KDa.
Sequence	LANMVQIIRQMCPPTYRGNRSNDQGMCFKHQEALKLFCEVDKEAICVVCRESRSHKQHSVLPLE EVVQEYQEIKLETTLVGILQIEQESIHSKAYNQ
Host	Mouse
Reactivity	Human
Isotype	IgG2a Kappa
Quality Control Testing	Antibody Reactive Against Recombinant Protein. Western Blot detection against Immunogen (36.41 KDa) .
Storage Buffer	In 1x PBS, pH 7.4
Storage Instruction	Store at -20°C or lower. Aliquot to avoid repeated freezing and thawing.

## Applications

- Western Blot (Transfected lysate)

Western Blot analysis of TRIM52 expression in transfected 293T cell line by TRIM52 monoclonal antibody (M01), clone 6D5.

Lane 1: TRIM52 transfected lysate(34.653 KDa).

Lane 2: Non-transfected lysate.

[Protocol Download](#)

- Western Blot (Recombinant protein)

[Protocol Download](#)

- Sandwich ELISA (Recombinant protein)

Detection limit for recombinant GST tagged TRIM52 is approximately 1ng/ml as a capture antibody.

[Protocol Download](#)

- ELISA

## Gene Info — TRIM52

Entrez GeneID [84851](#)

GeneBank Accession# [NM\\_032765](#)

Protein Accession#	<a href="#">NP_116154</a>
Gene Name	TRIM52
Gene Alias	MGC16175, RNF102
Gene Description	tripartite motif-containing 52
Gene Ontology	<a href="#">Hyperlink</a>
Other Designations	-