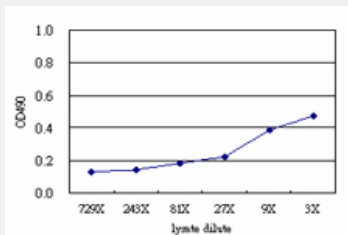


ZNF496 (Human) Matched Antibody Pair

Catalog # H00084838-AP51

Size 1 Set

Applications



Sandwich ELISA detection sensitivity ranging from approximately 81x to 3x dilution of the ZNF496 293T overexpression lysate (non-denatured).

Specification

Product Description	This antibody pair set comes with a matched antibody pair to detect and quantify the protein level of human ZNF496.
Reactivity	Human
Interspecies Antigen Sequence	Mouse (77); Rat (76)
Quality Control Testing	Standard curve using ZNF496 293T overexpression lysate (non-denatured) as an analyte. Sandwich ELISA detection sensitivity ranging from approximately 81x to 3x dilution of the ZNF496 293T overexpression lysate (non-denatured).
Supplied Product	Antibody pair set content: 1. Capture antibody: mouse monoclonal anti-ZNF496 (100 ug) 2. Detection antibody: rabbit purified polyclonal anti-ZNF496 (50 ug) *Reagents are sufficient for at least 3-5 x 96 well plates using recommended protocols.
Storage Instruction	Store reagents of the antibody pair set at -20°C or lower. Please aliquot to avoid repeated freeze thaw cycle. Reagents should be returned to -20°C storage immediately after use.

Applications

- ELISA Pair (Transfected lysate)

[Protocol Download](#)

Gene Info — ZNF496

Entrez GeneID	84838
Gene Name	ZNF496
Gene Alias	MGC15548, NIZP1, ZKSCAN17
Gene Description	zinc finger protein 496
Gene Ontology	Hyperlink
Other Designations	NSD1 (nuclear receptor binding SET-domain containing 1)-interacting zinc finger protein 1